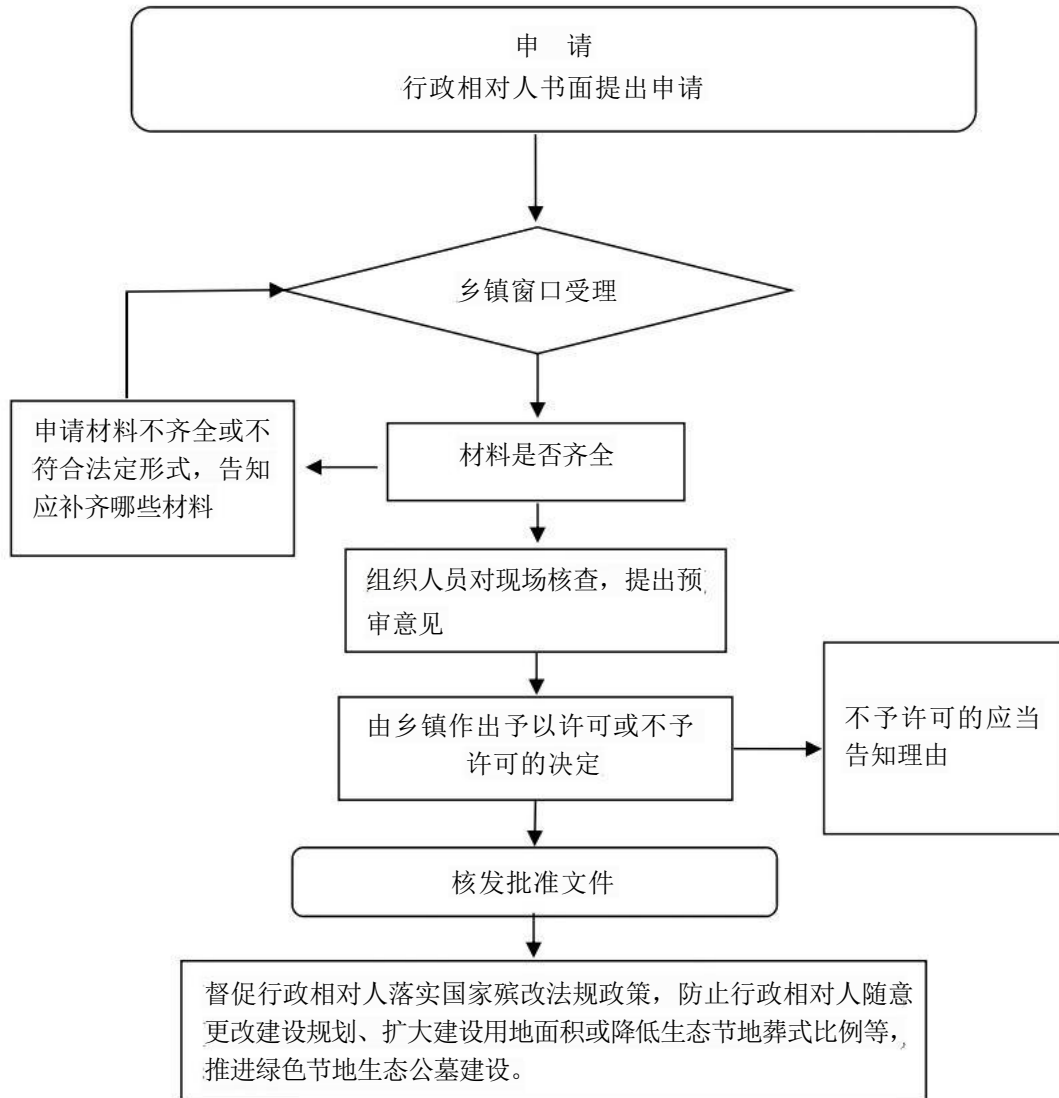
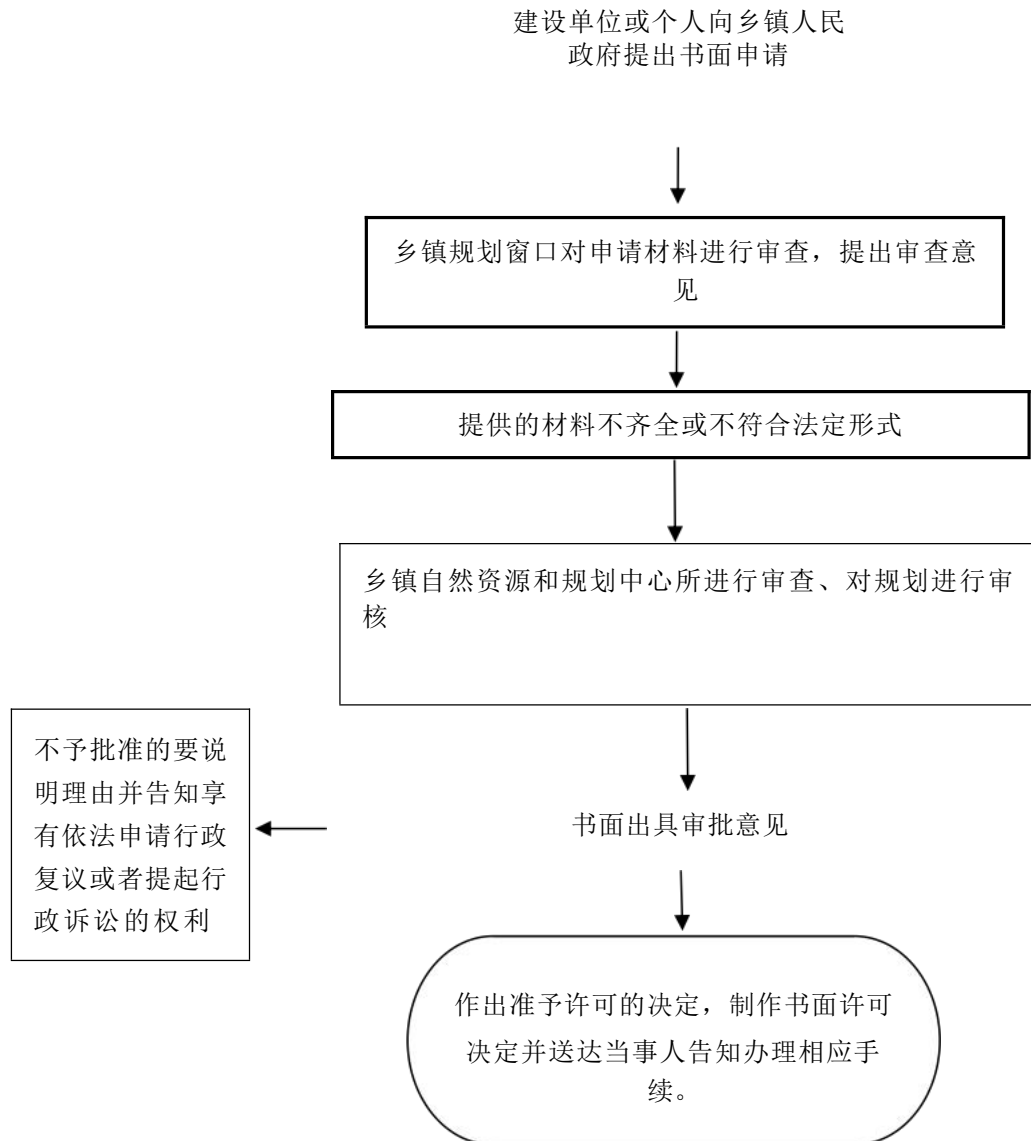


# 城关街道审批事项流程图

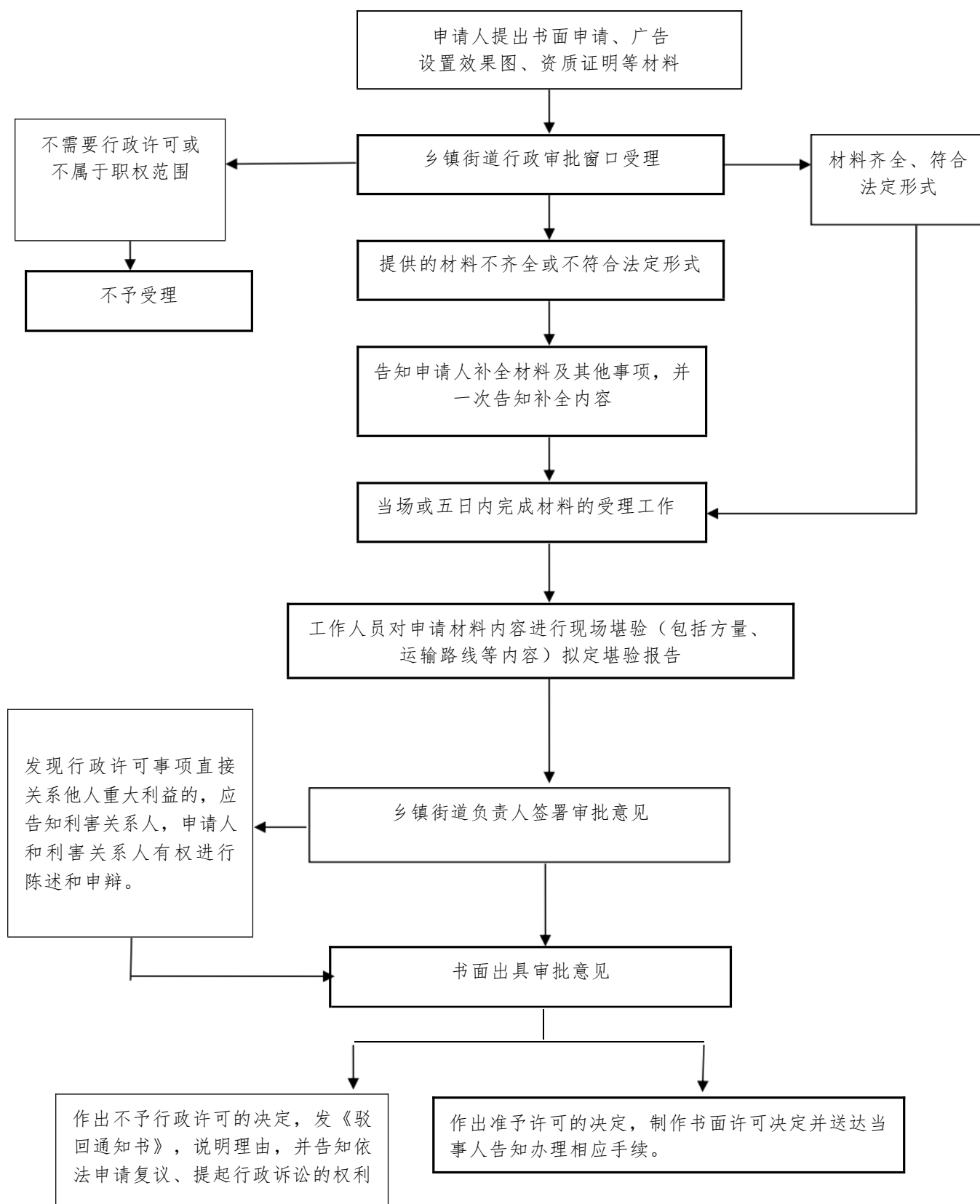
## 1. 殡葬设施建设审批



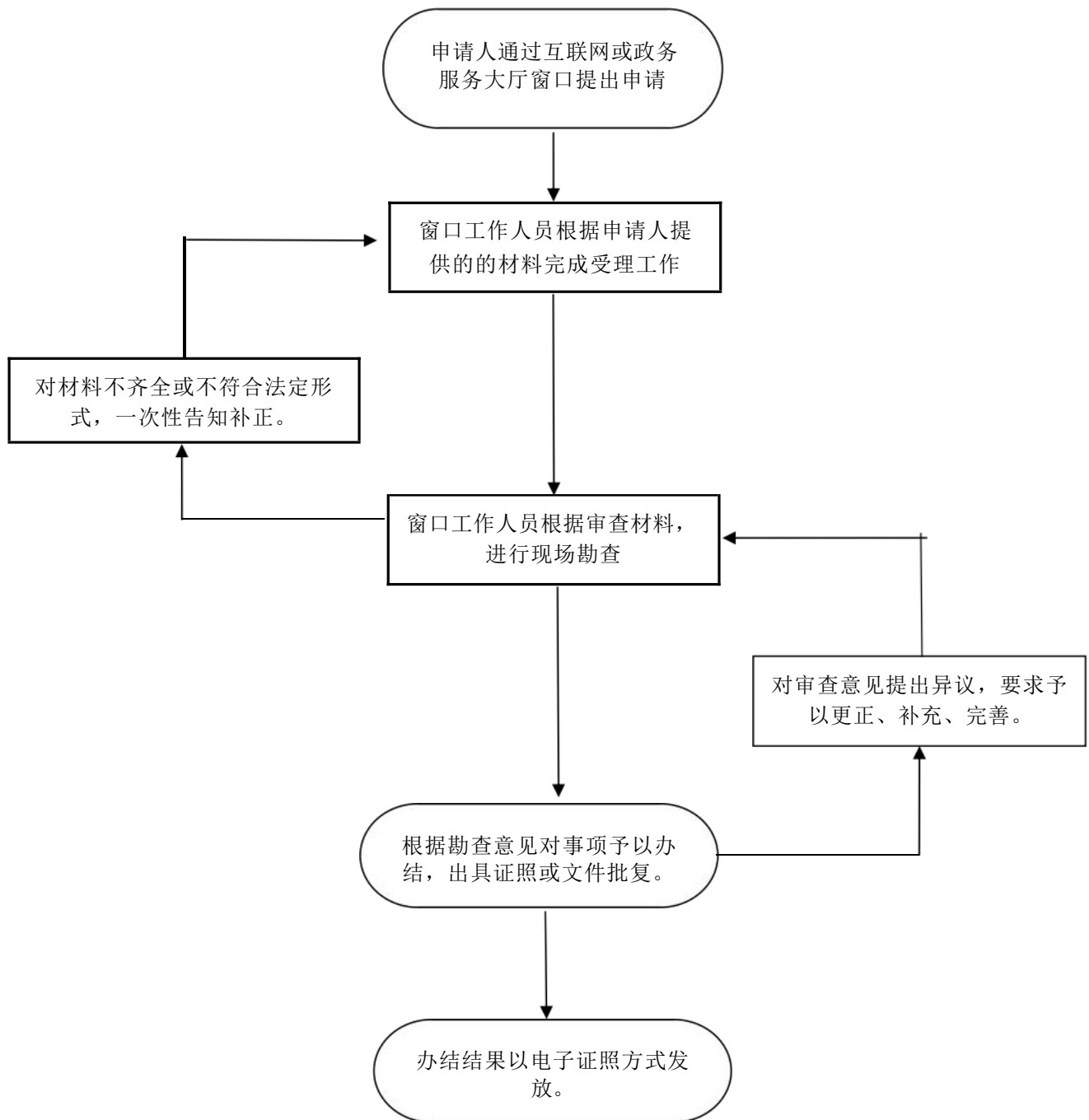
## 2.乡村建设规划许可



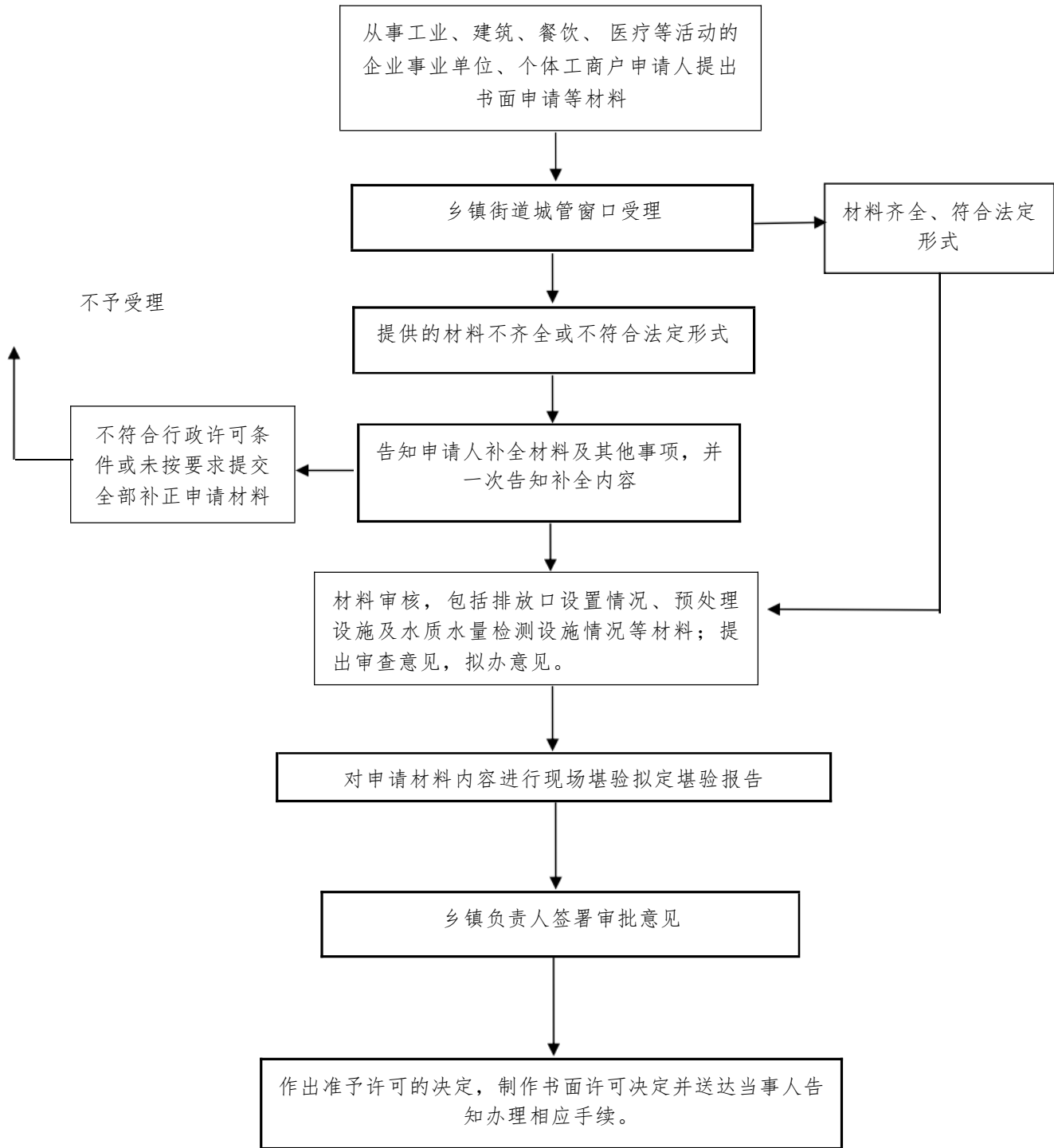
### 3.设置大型户外广告及在城市建筑物、设施上悬挂、张贴宣传品审批



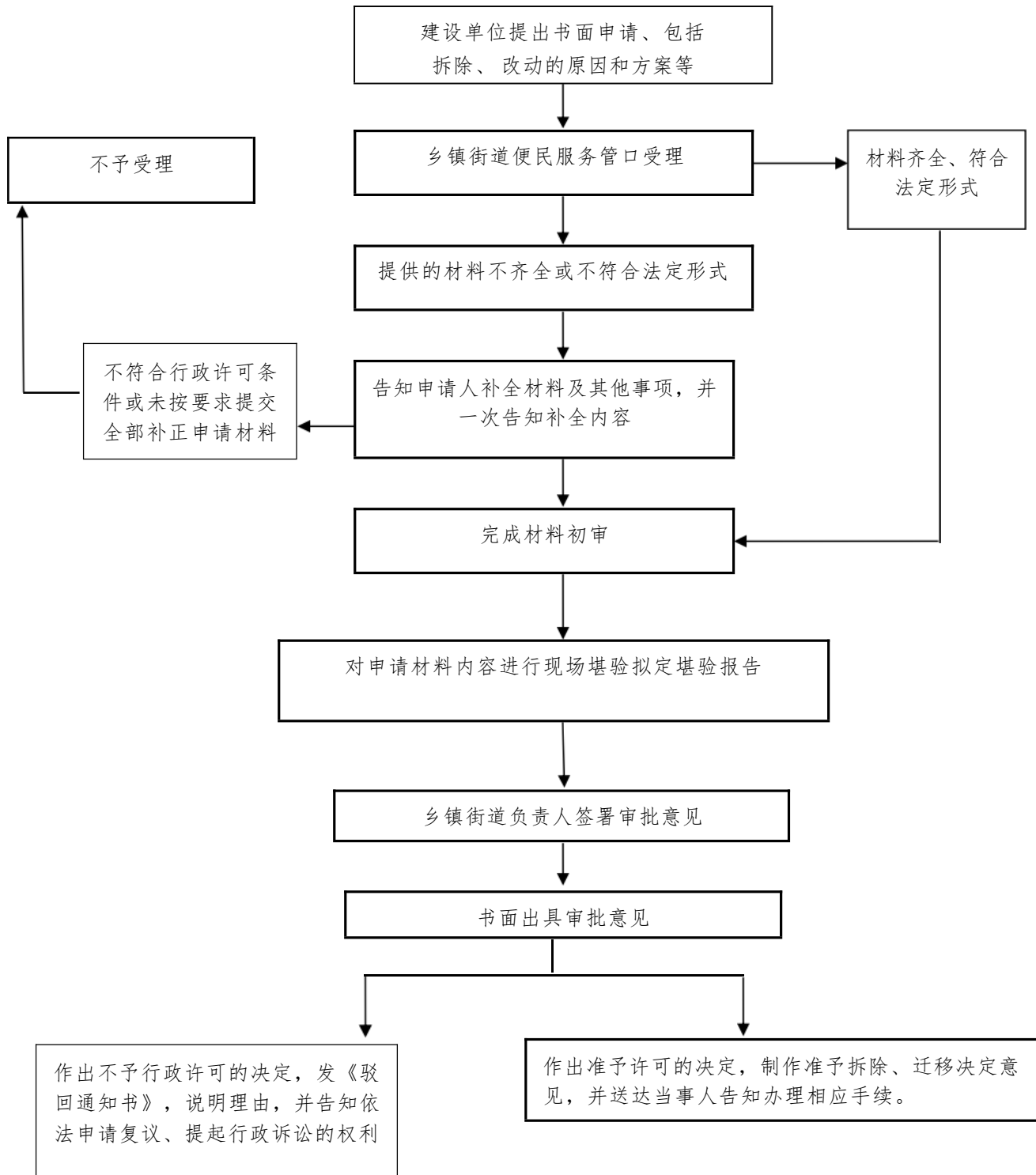
#### 4.临时性建筑物搭建、堆放物料、占道施工审批



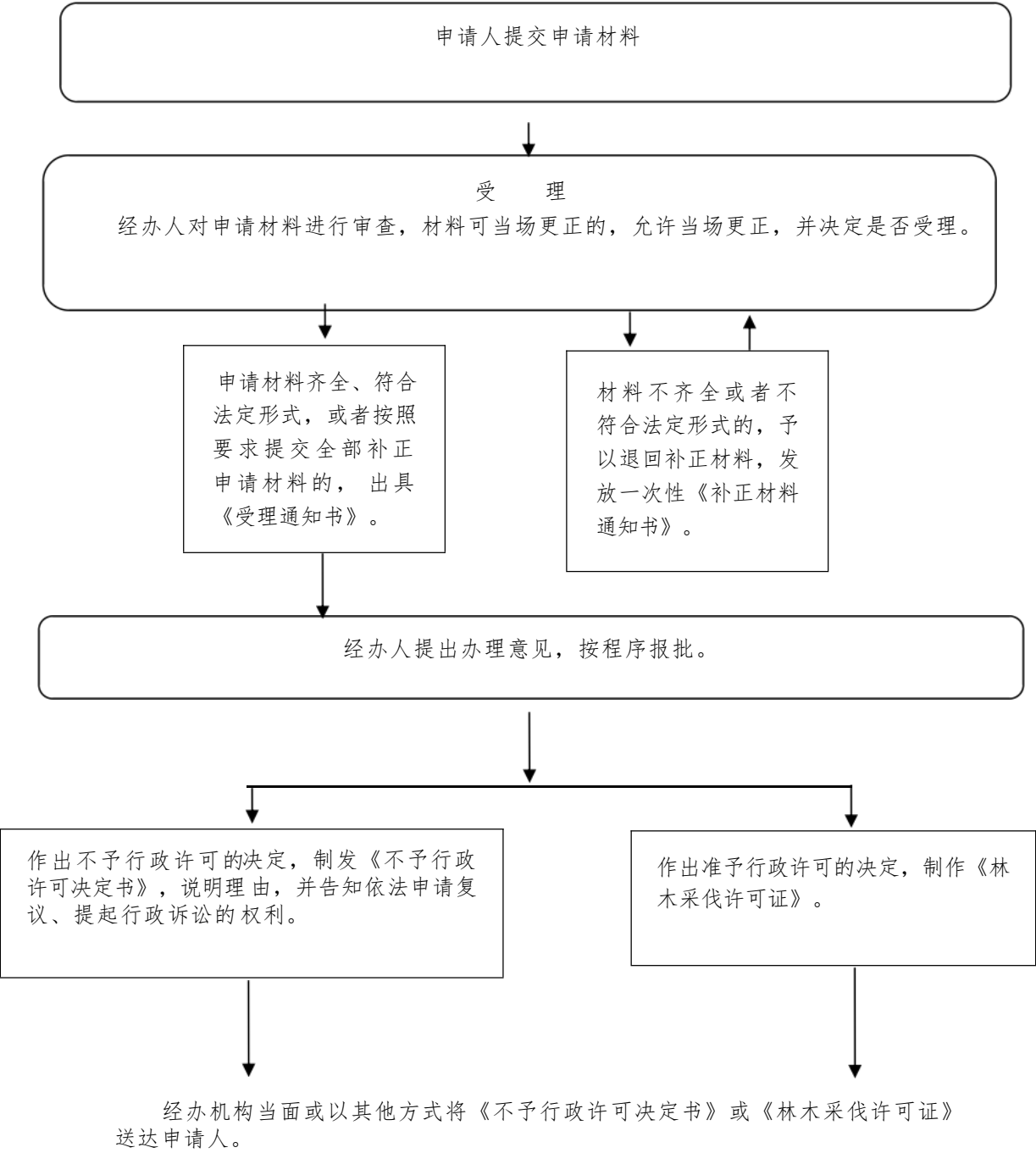
## 5.城镇污水排入排水管网许可



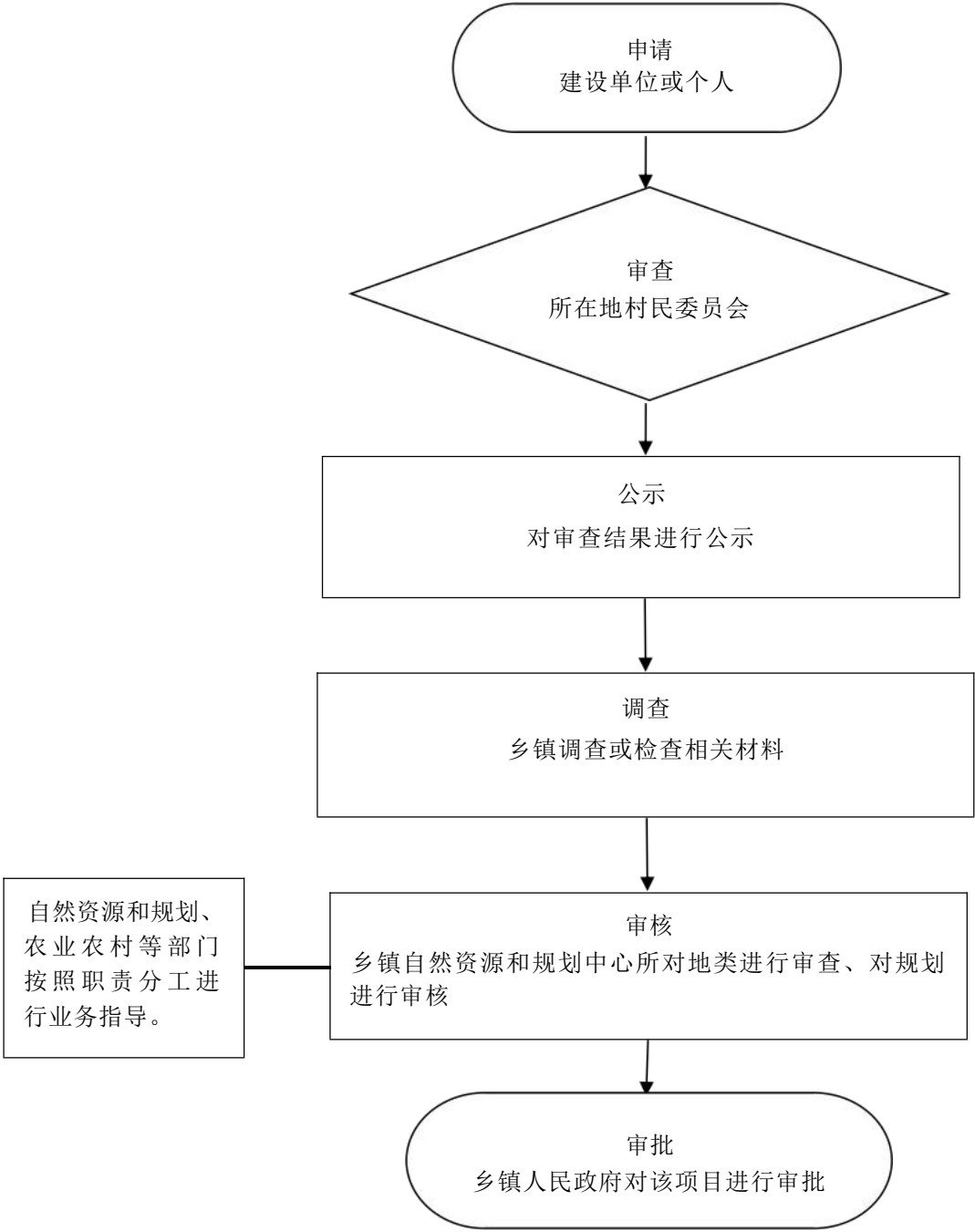
## 6.拆除、改动城镇排水与污水处理设施审核



## 7.林木采伐许可证核发

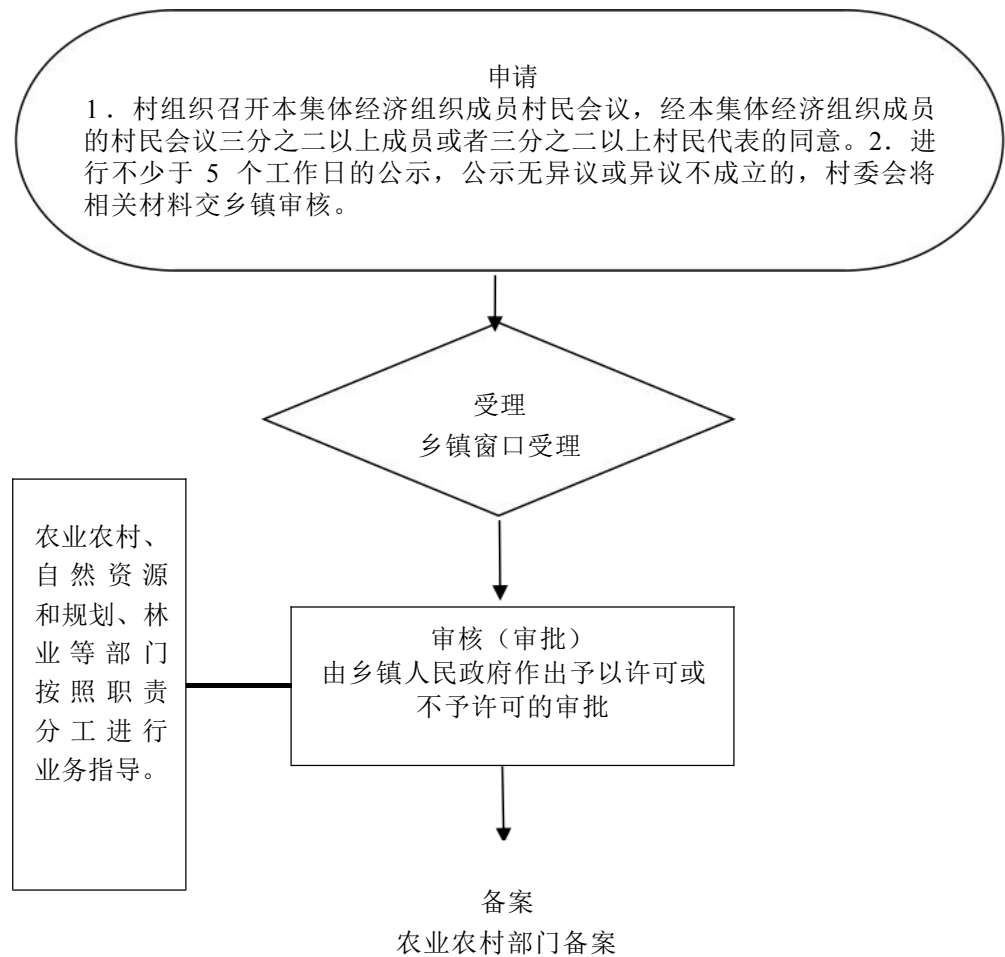


8.在村庄、集镇规划区修建临时建筑物、构筑物和其他设施的批准

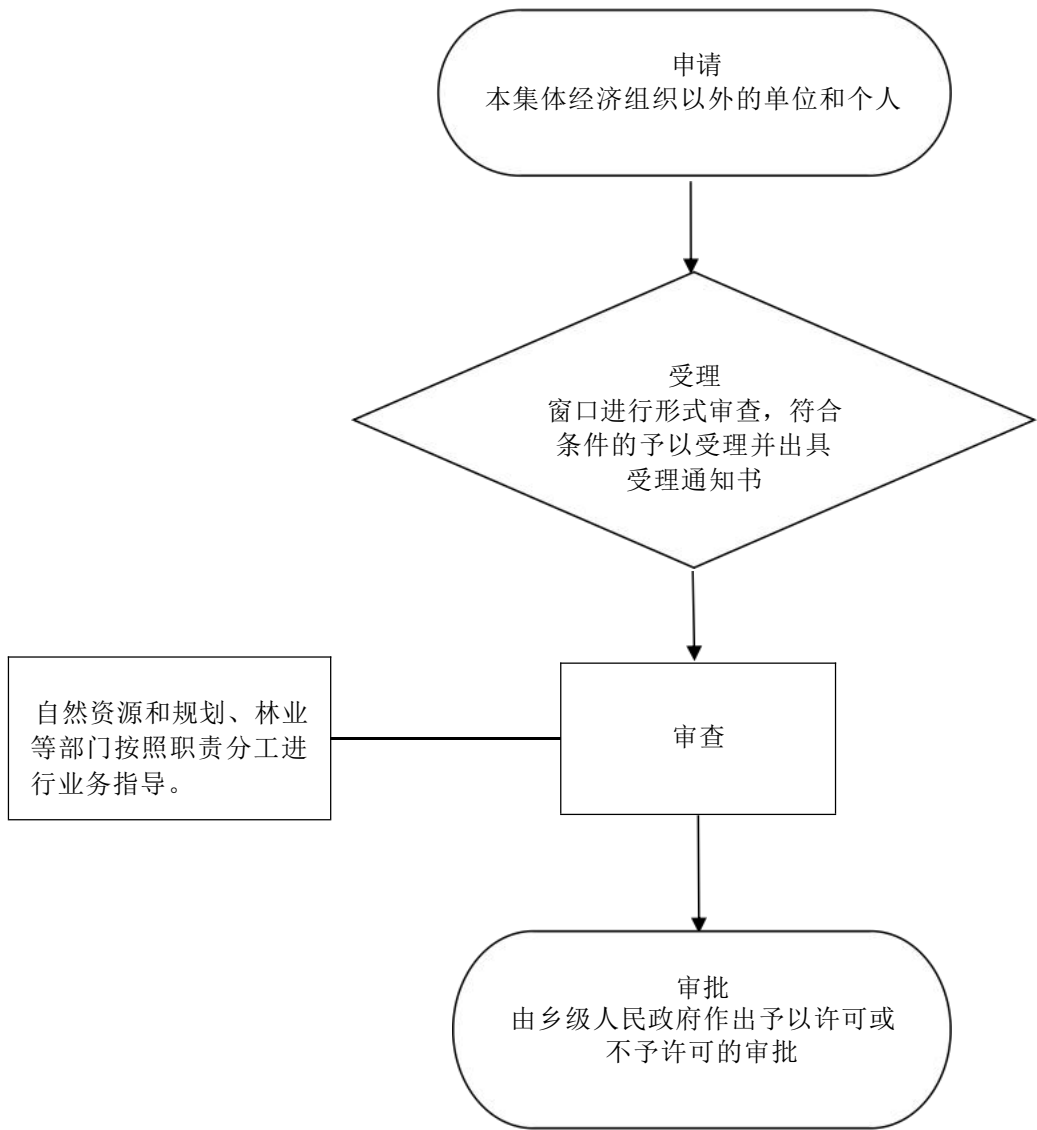




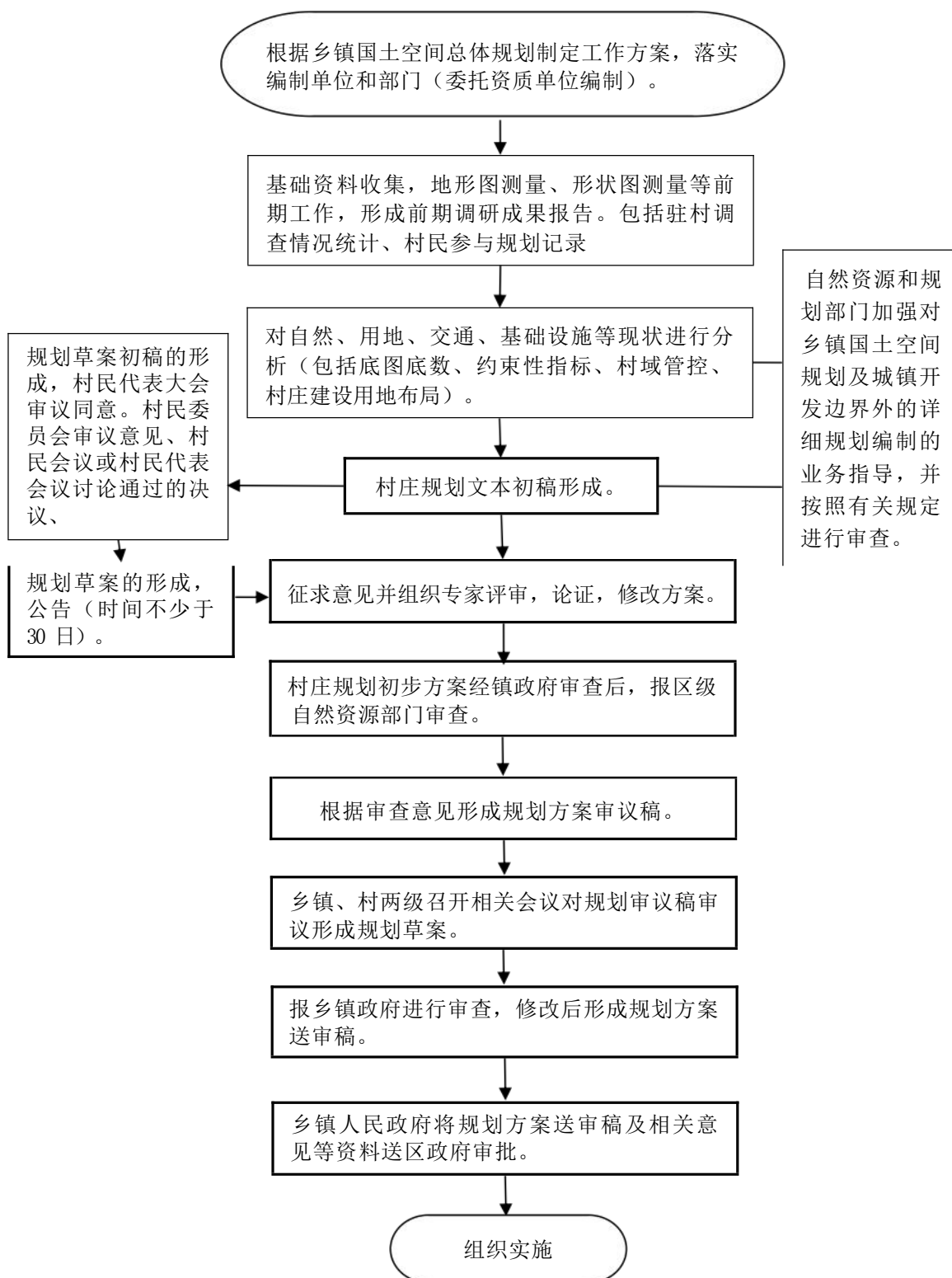
9.农民集体所有土地由本集体经济组织以外的单位或者个人  
承包经营的审批



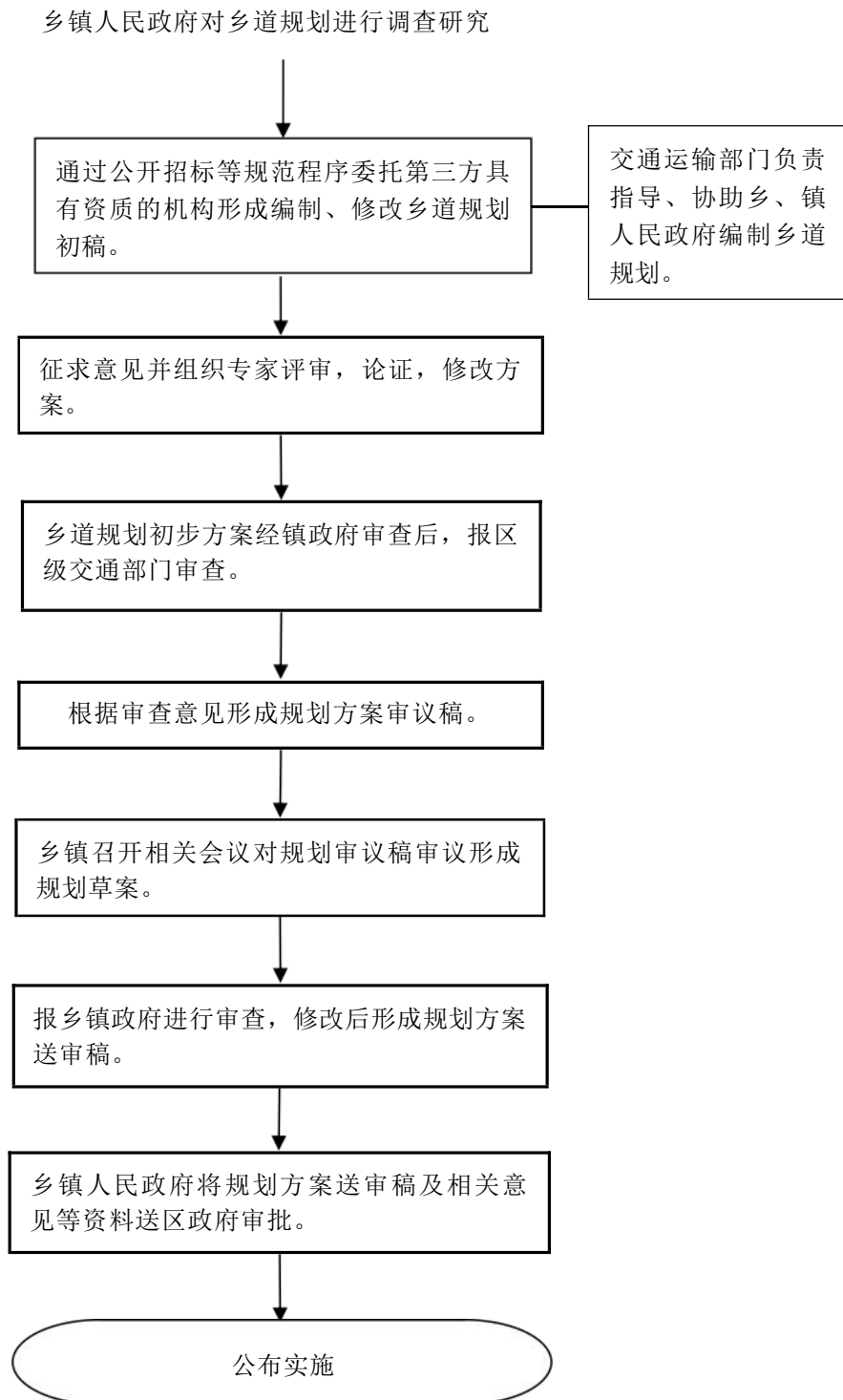
10.农村集体经济组织统一经营的林权流转给本集体经济组织以外的单位和个人的流转方案审批



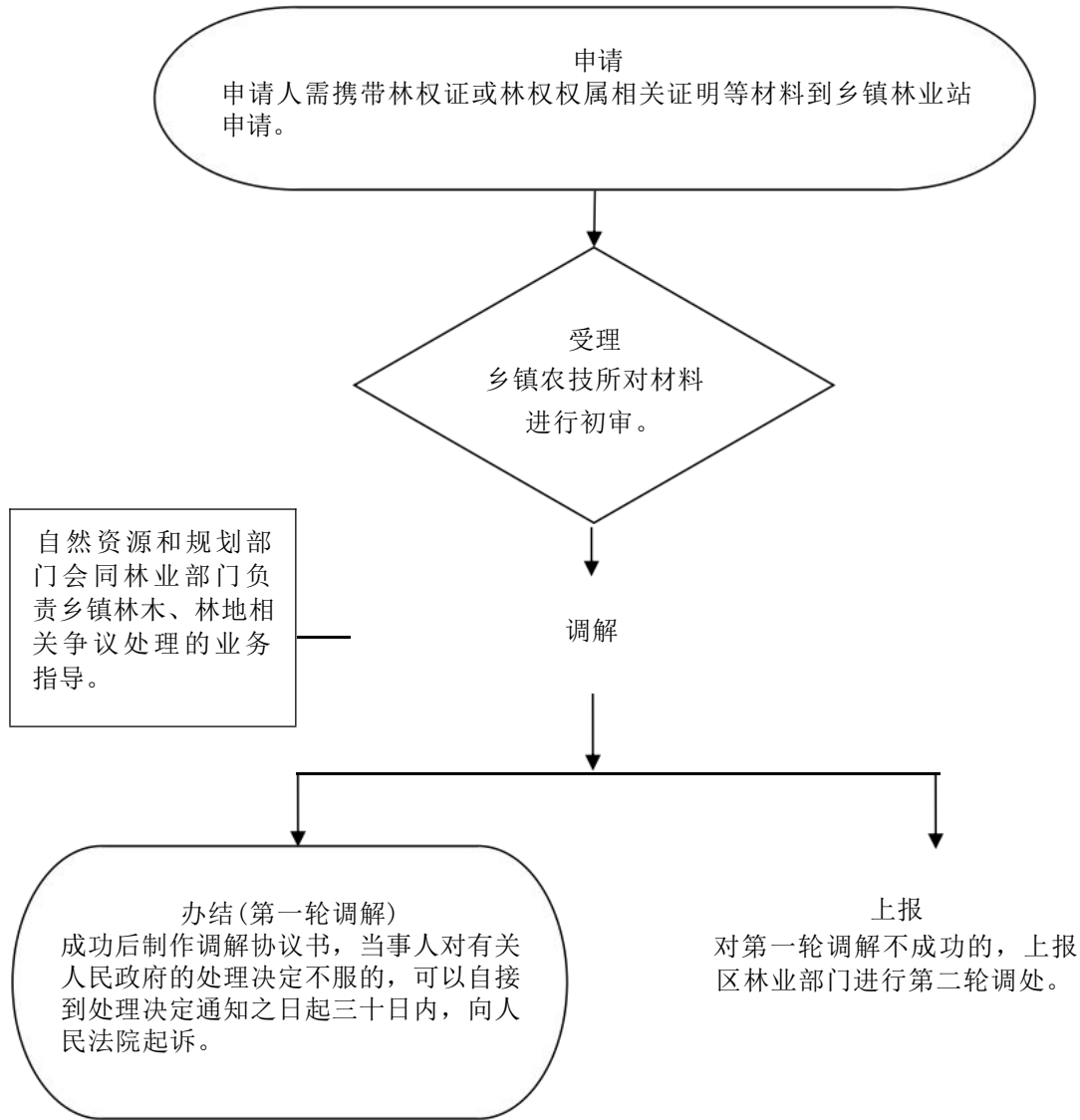
## 11.编制镇国土空间规划及村庄规划



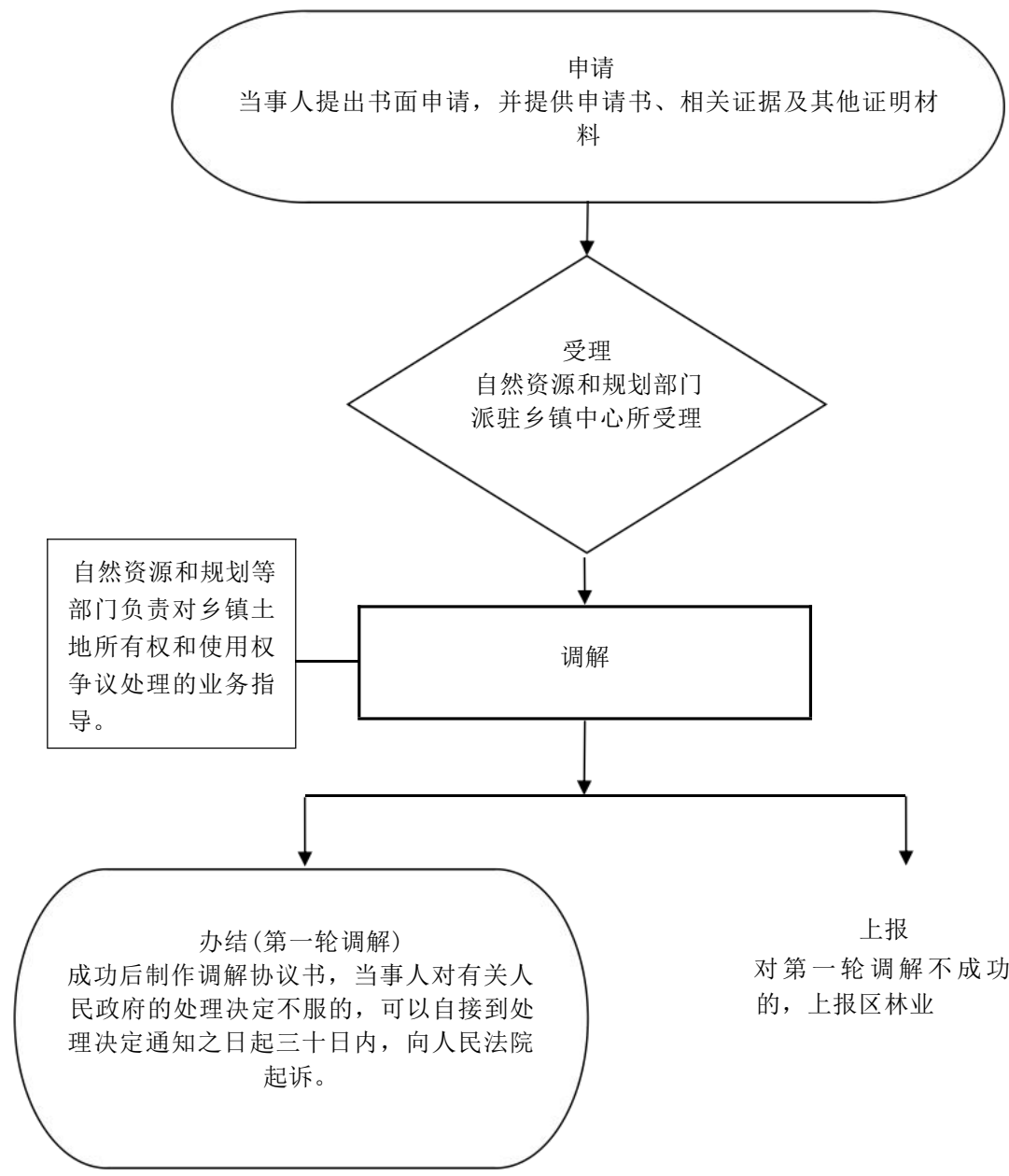
## 12.编制、修改乡道规划



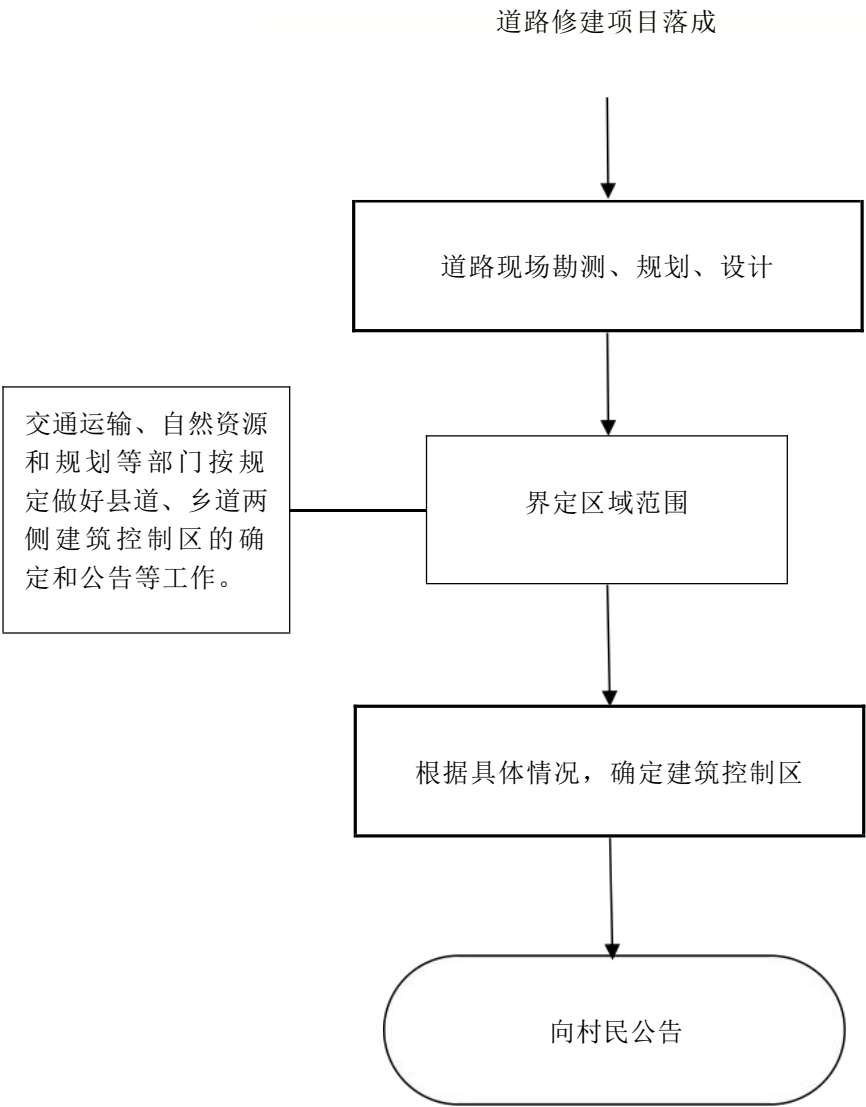
13.个人之间、个人与单位之间林木所有权和林地使用权争议处理



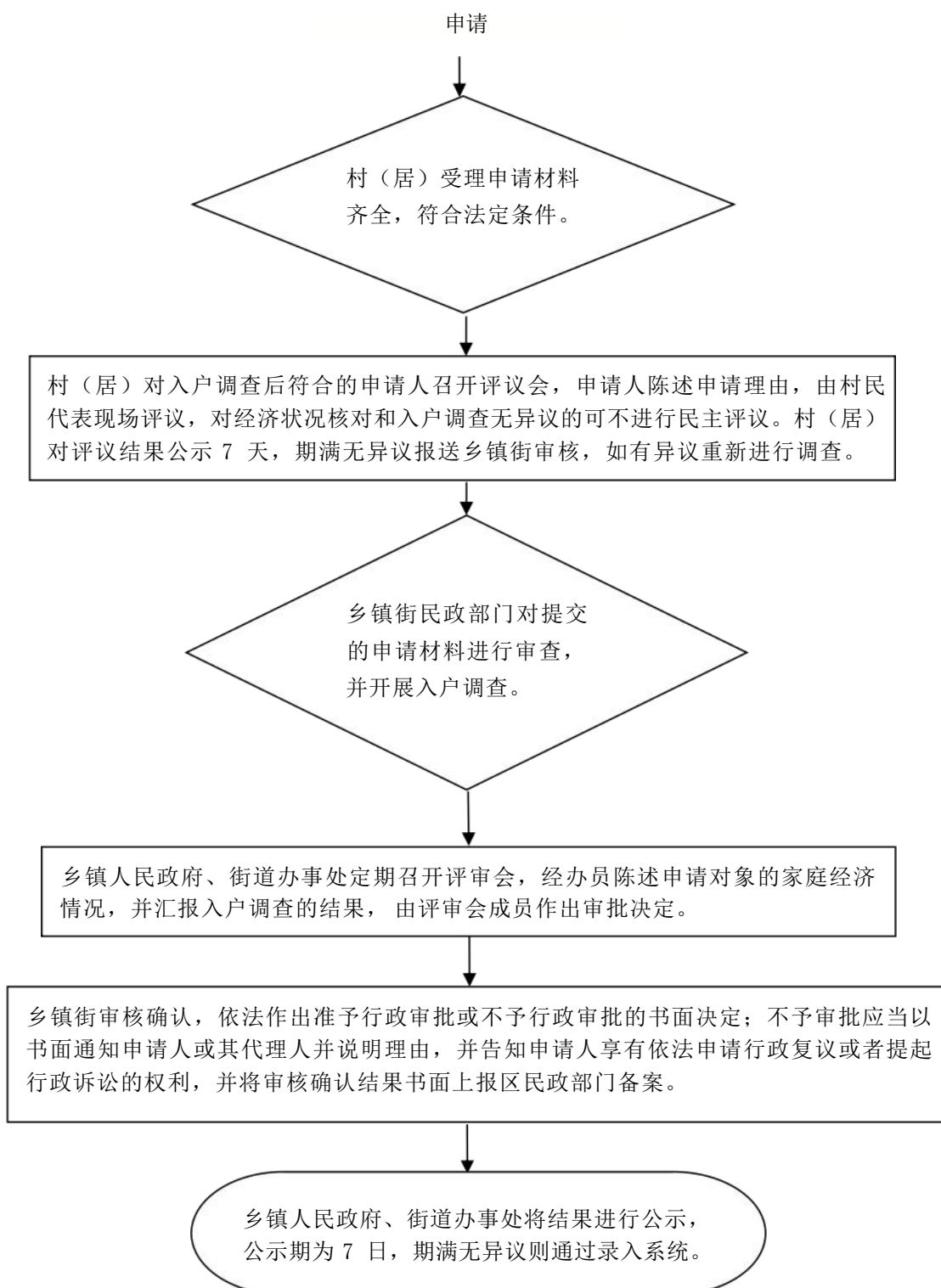
# 14.个人之间、个人与单位之间土地所有权和使用权争议处理



# 15.确定村道公路用地外缘的建筑控制区

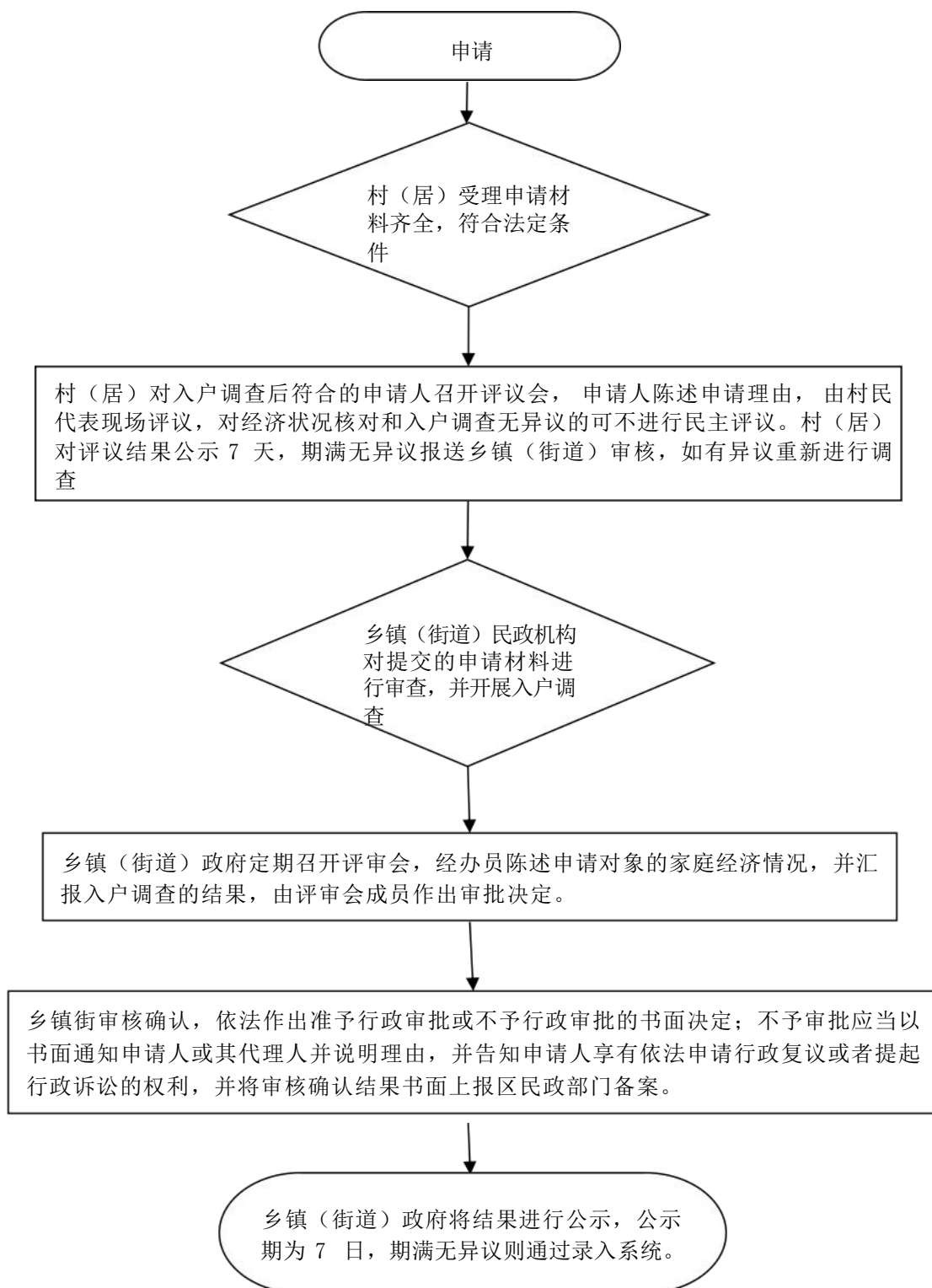


## 16.孤儿基本生活费审核确认

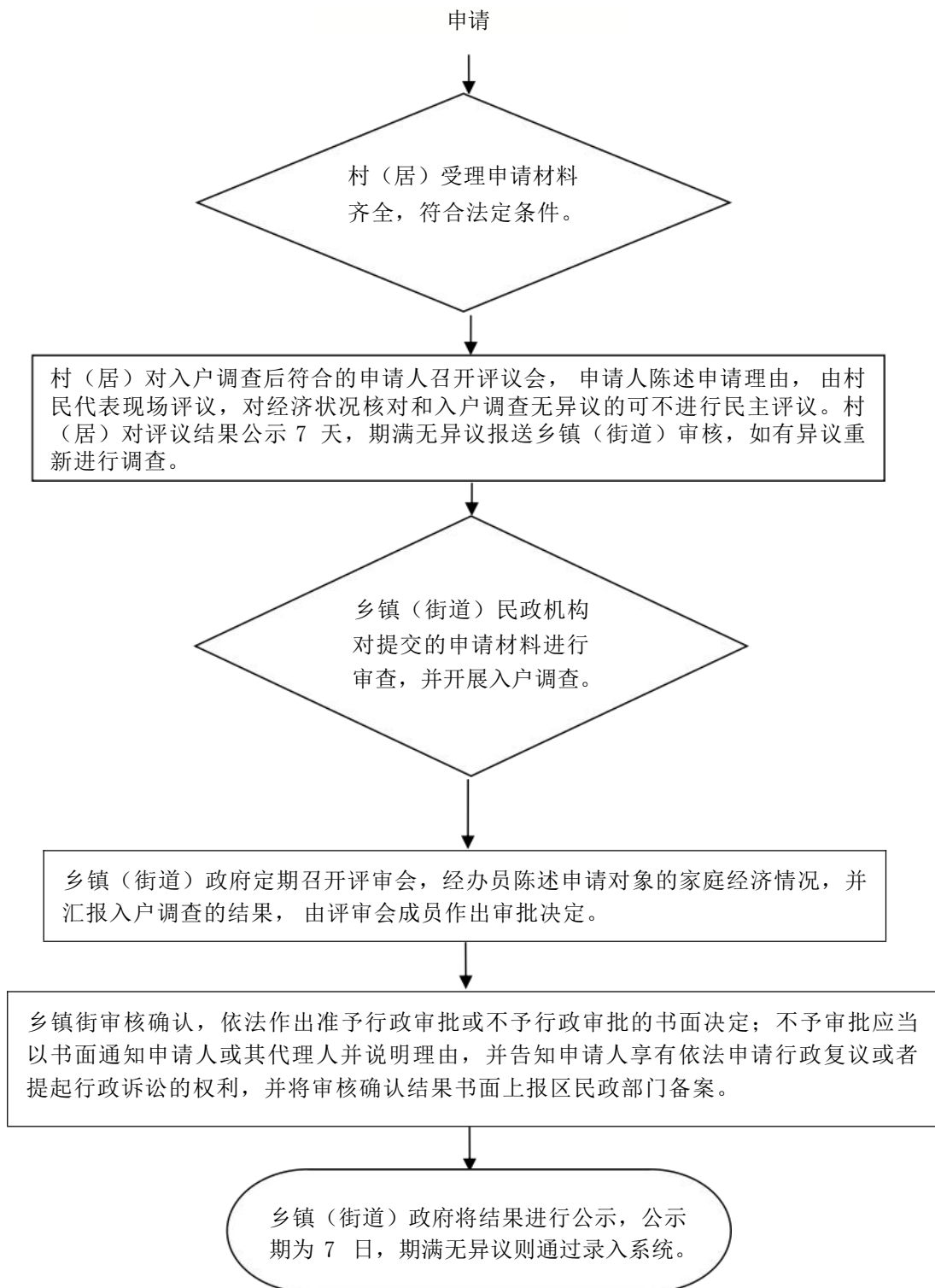




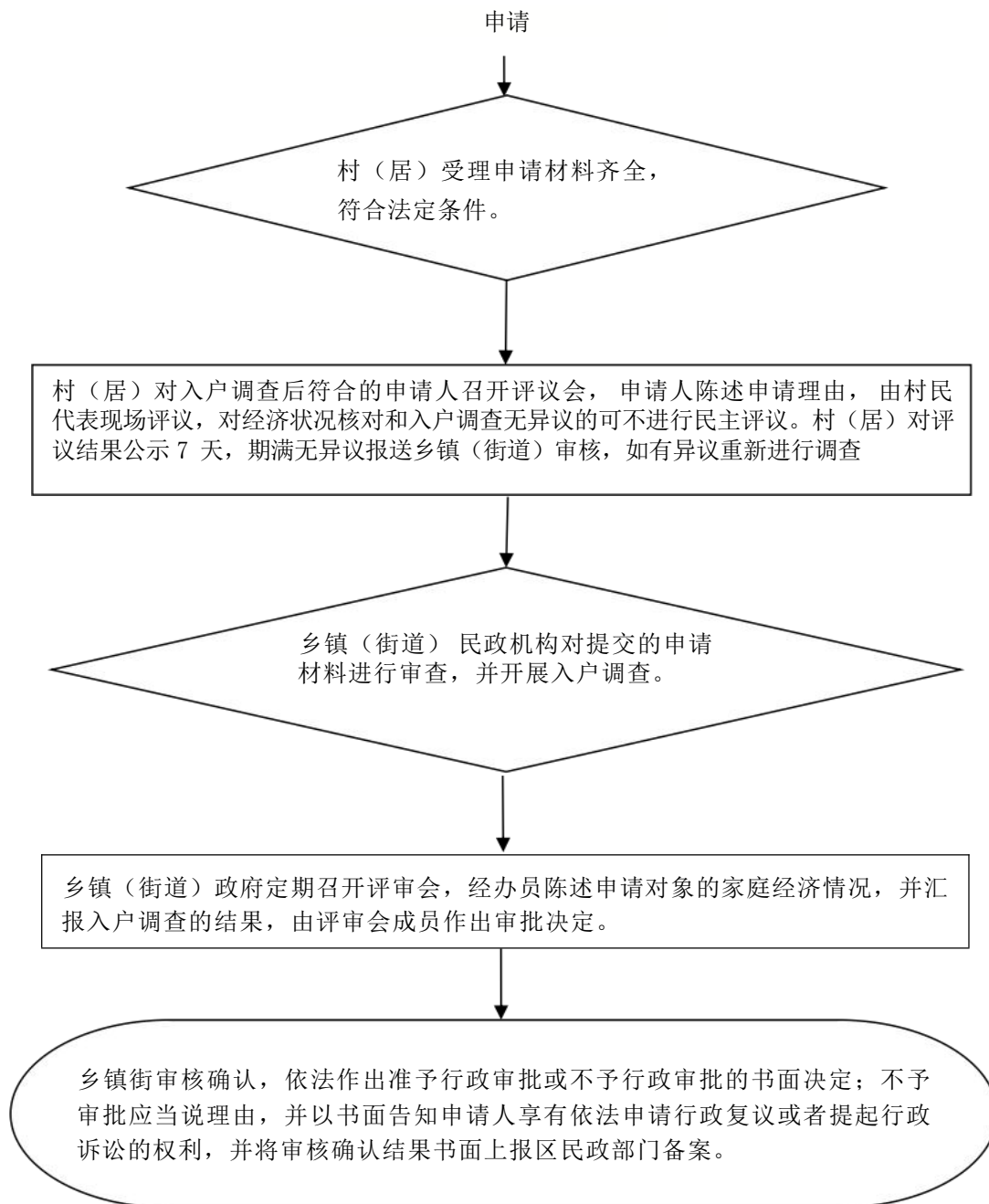
## 17.最低生活保障审核确认



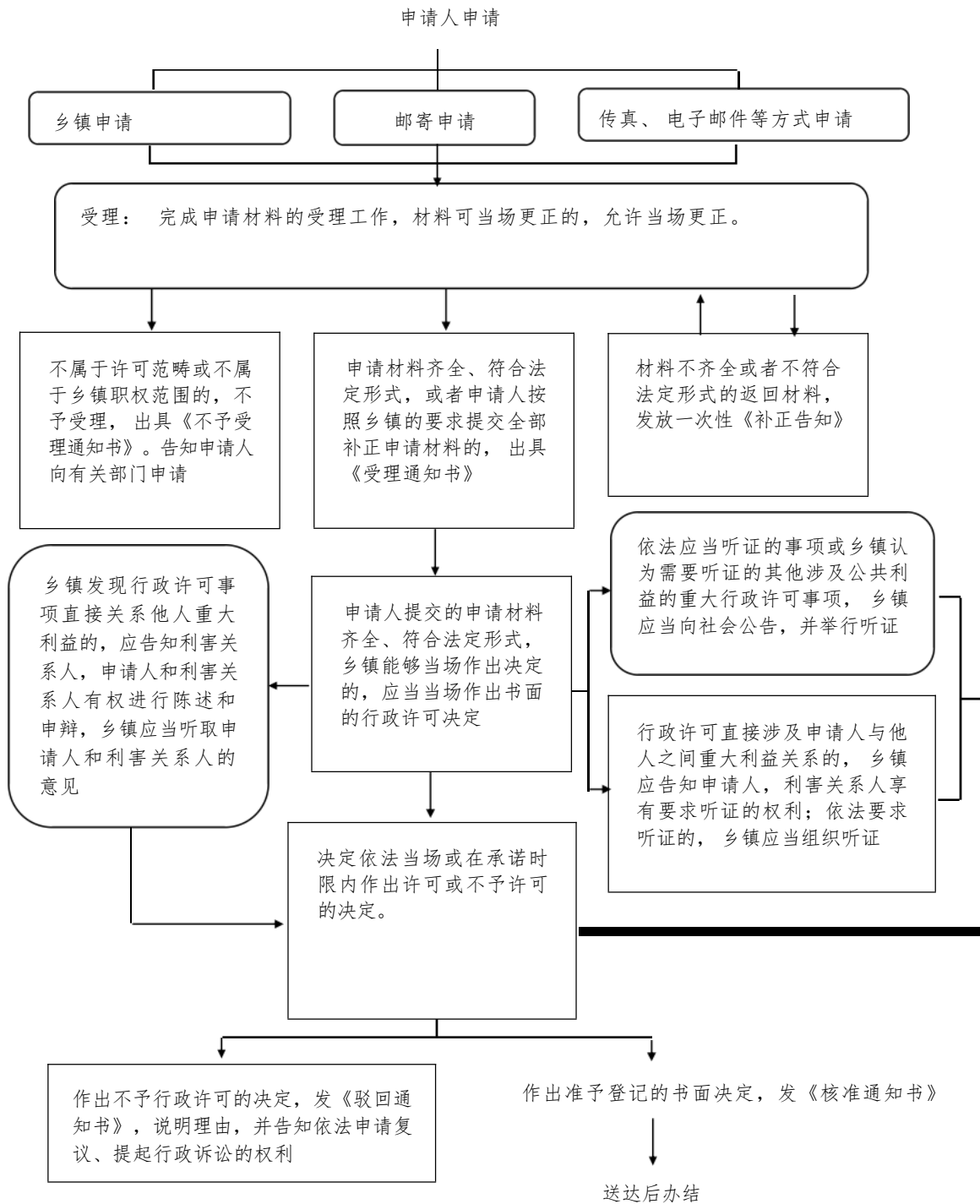
## 18.特困人员救助供养待遇审核确认



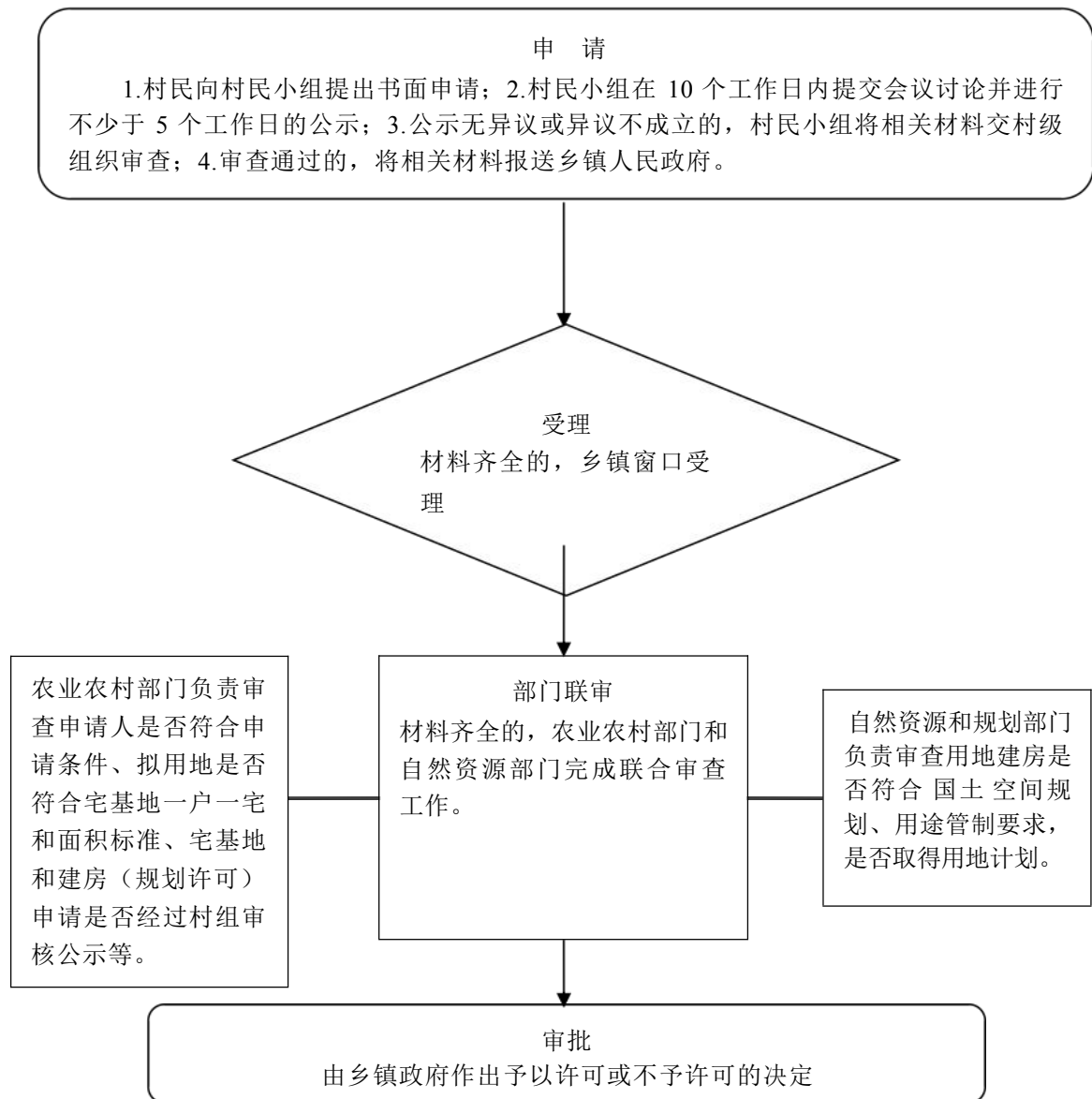
## 19.临时救助审核确认



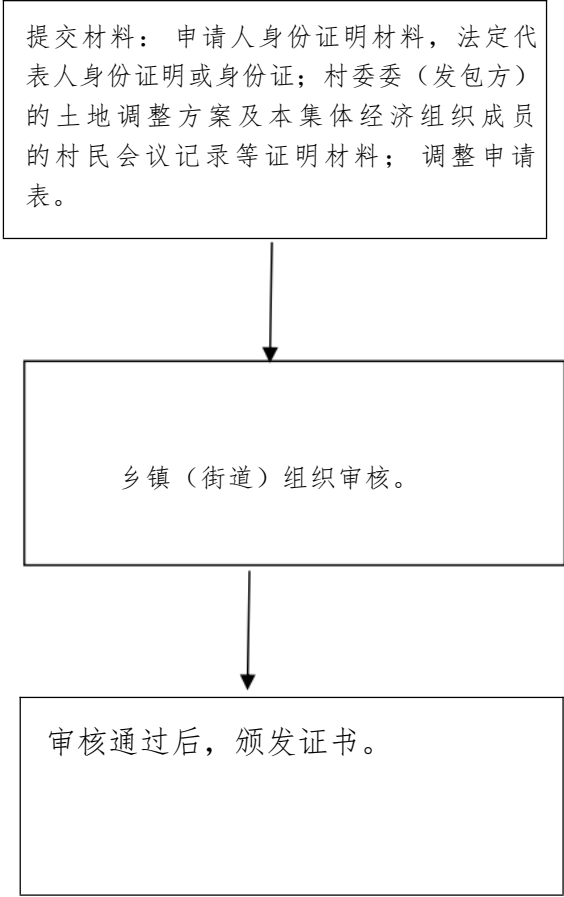
## 20. 占用、拆除、改动、迁移城市照明设施批准



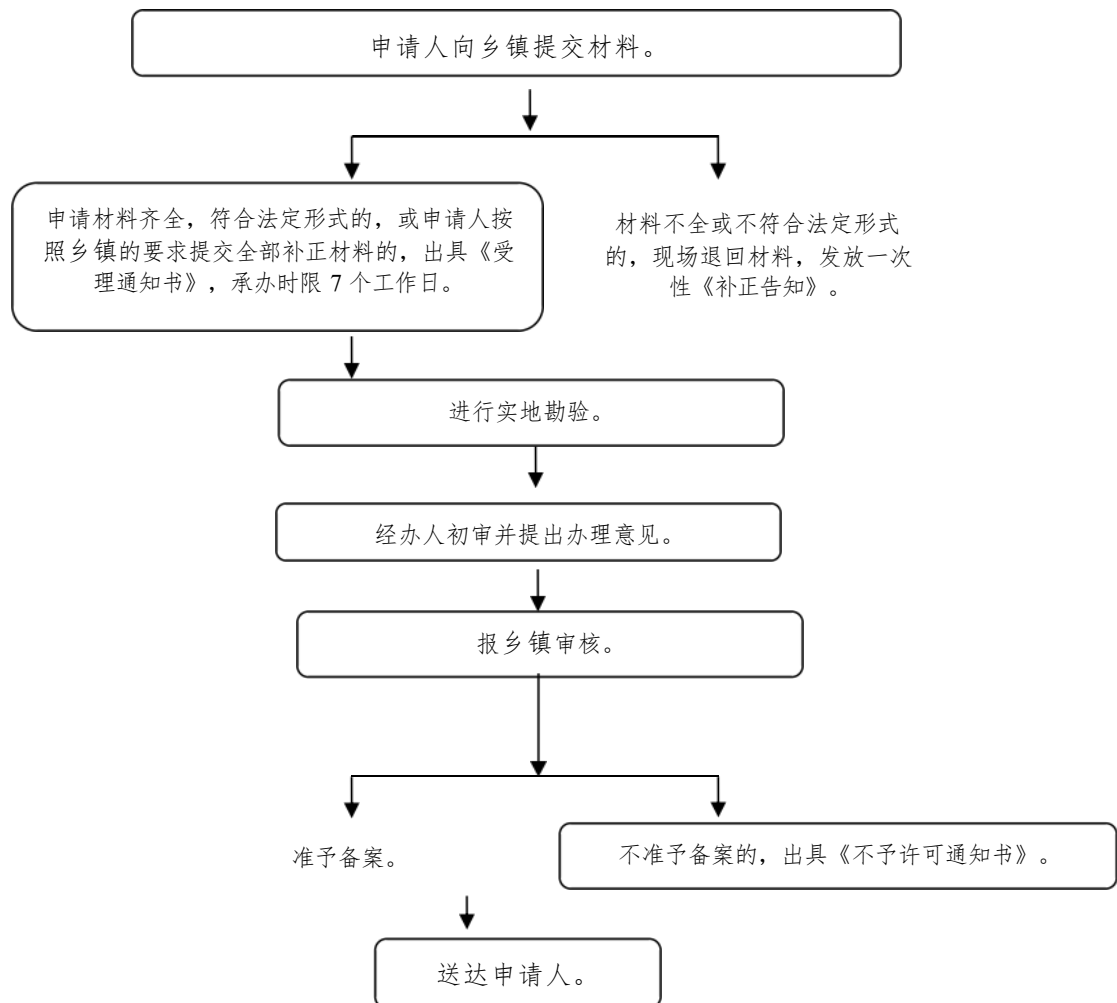
## 21.《农村宅基地批准书》核发



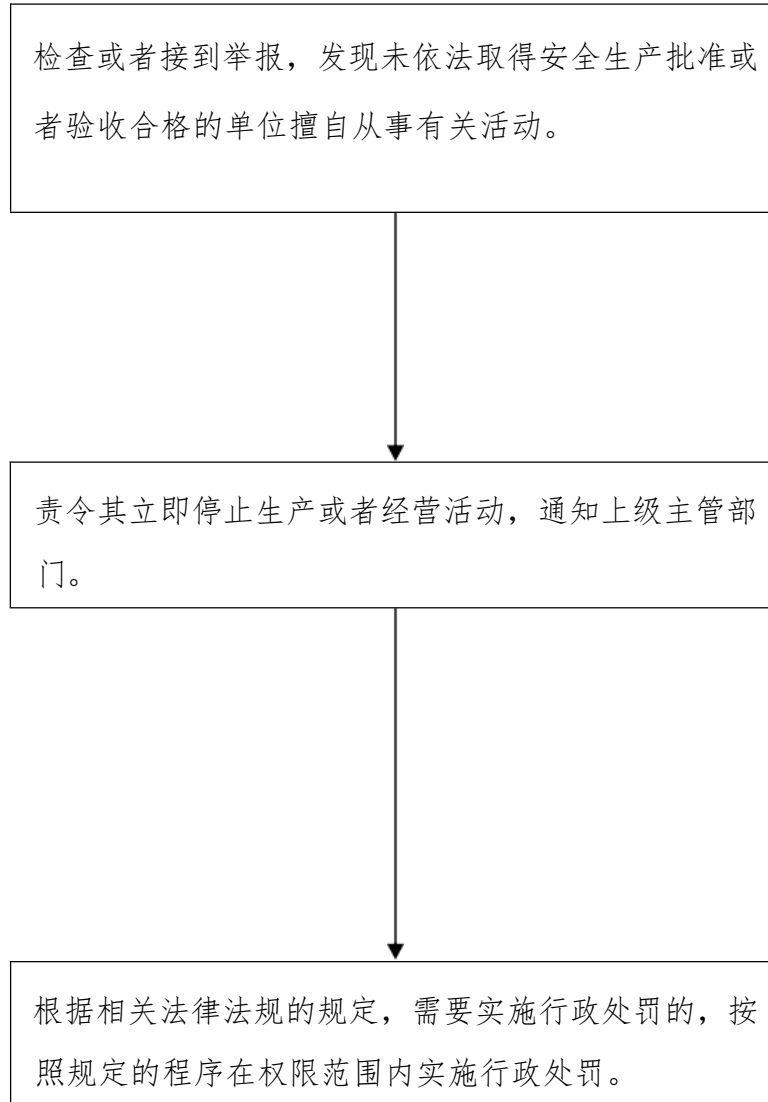
## 22. 农村承包地调整的批准



## 23. 乡村兽医备案

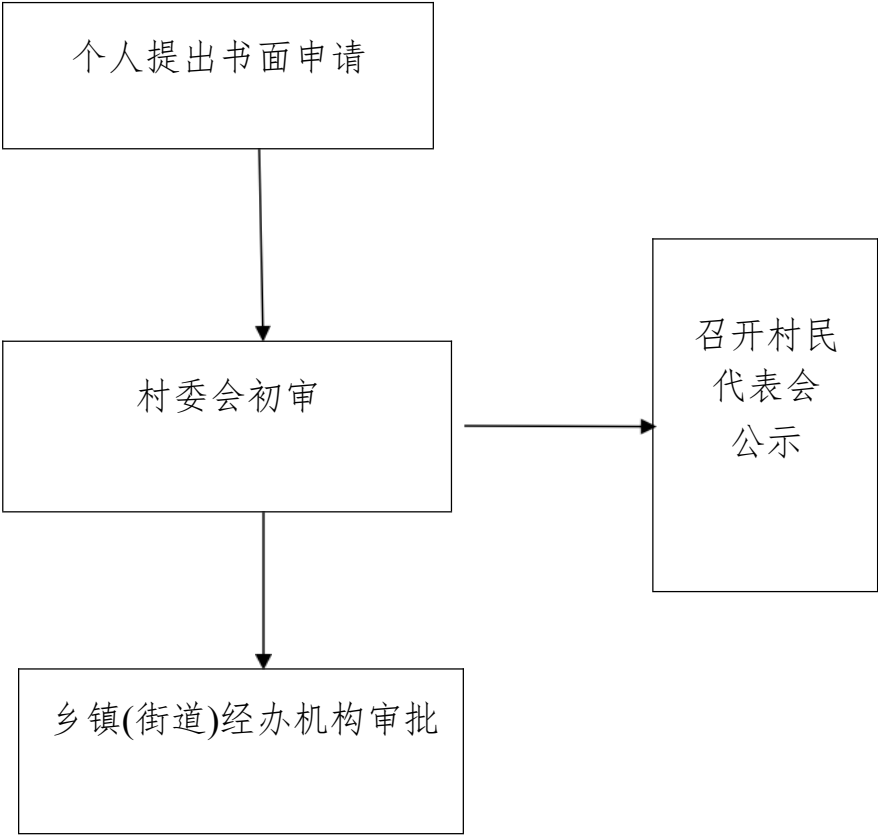


## 24. 责令立即排除隐患、从危险区域内撤出作业人员、暂时停产停业或者停止使用相关设施、设备

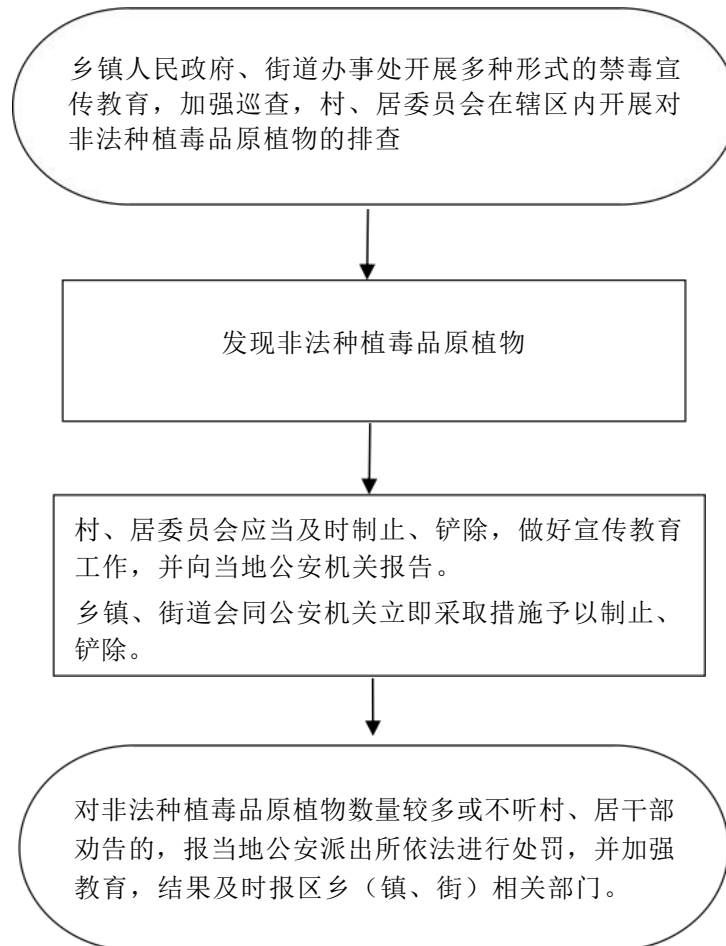




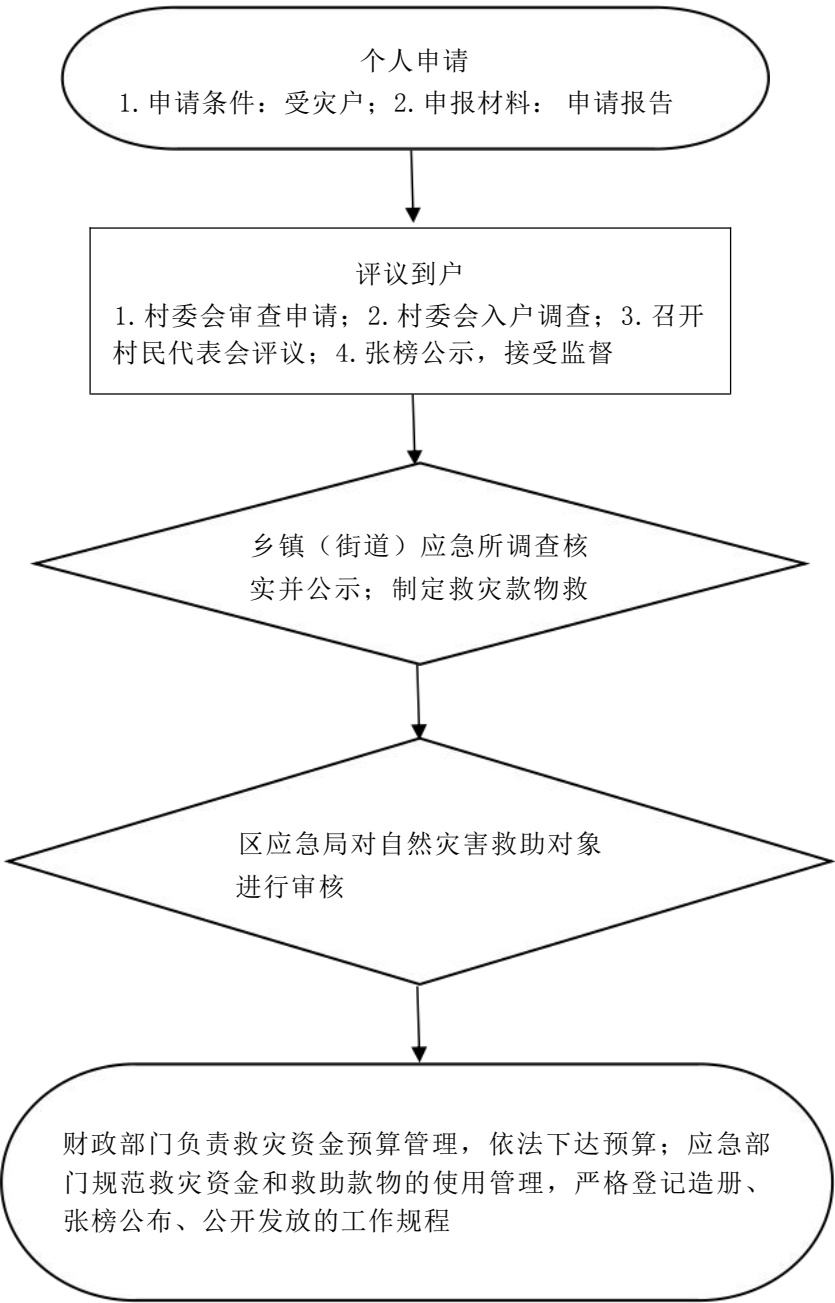
25. 医疗救助对象审核确认



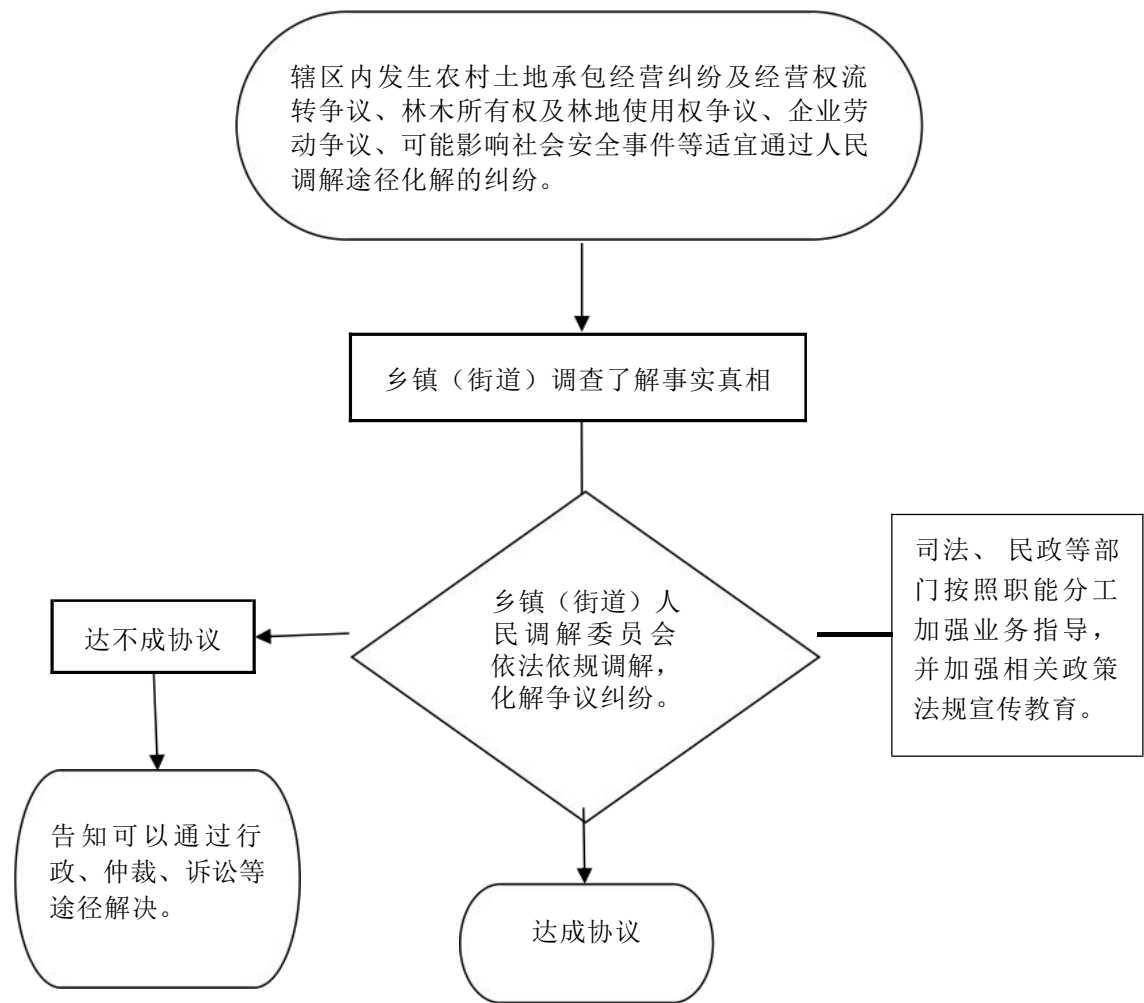
## 26. 对非法种植毒品原植物的铲除



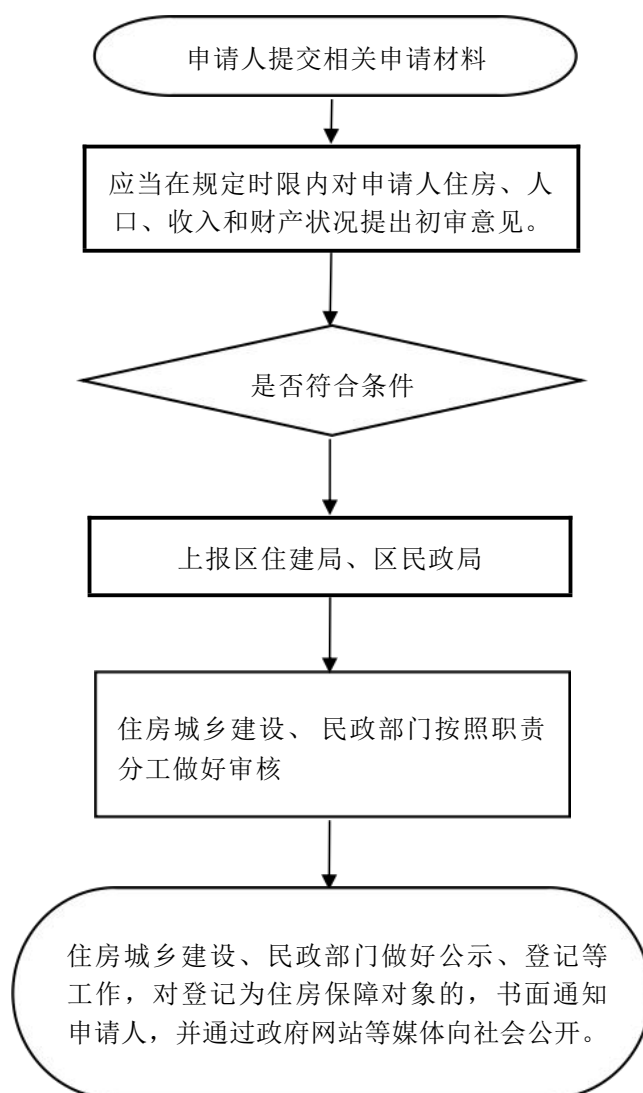
## 27. 自然灾害生活救助对象审核转报



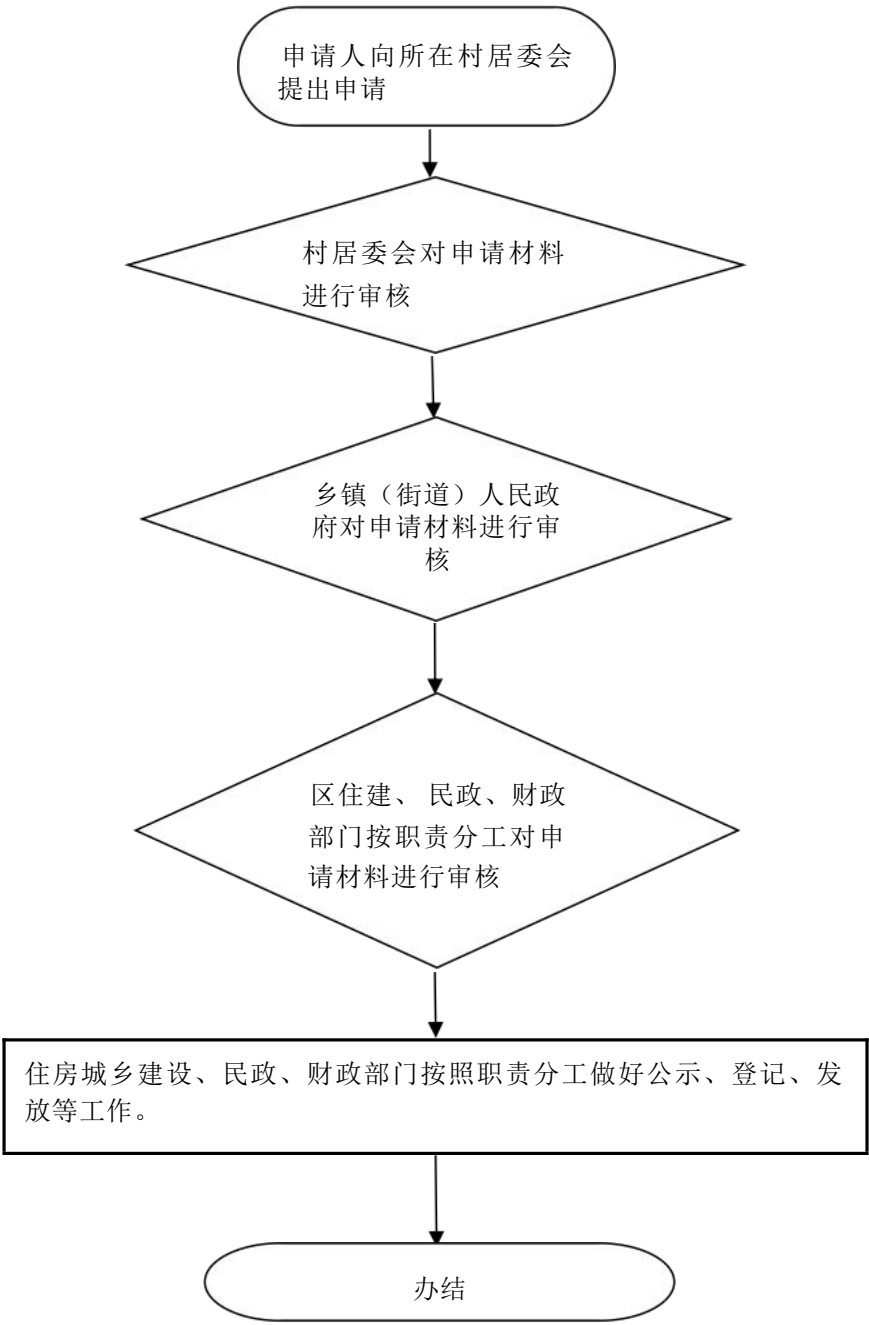
28.辖区内有关争议及矛盾纠纷的调解



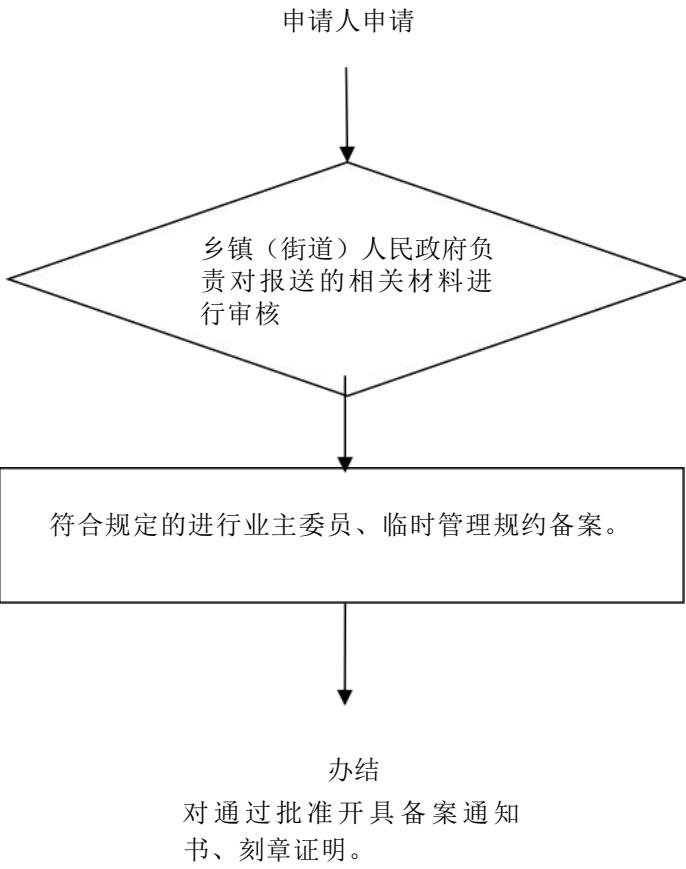
## 29．公共租赁住房申请初审流程



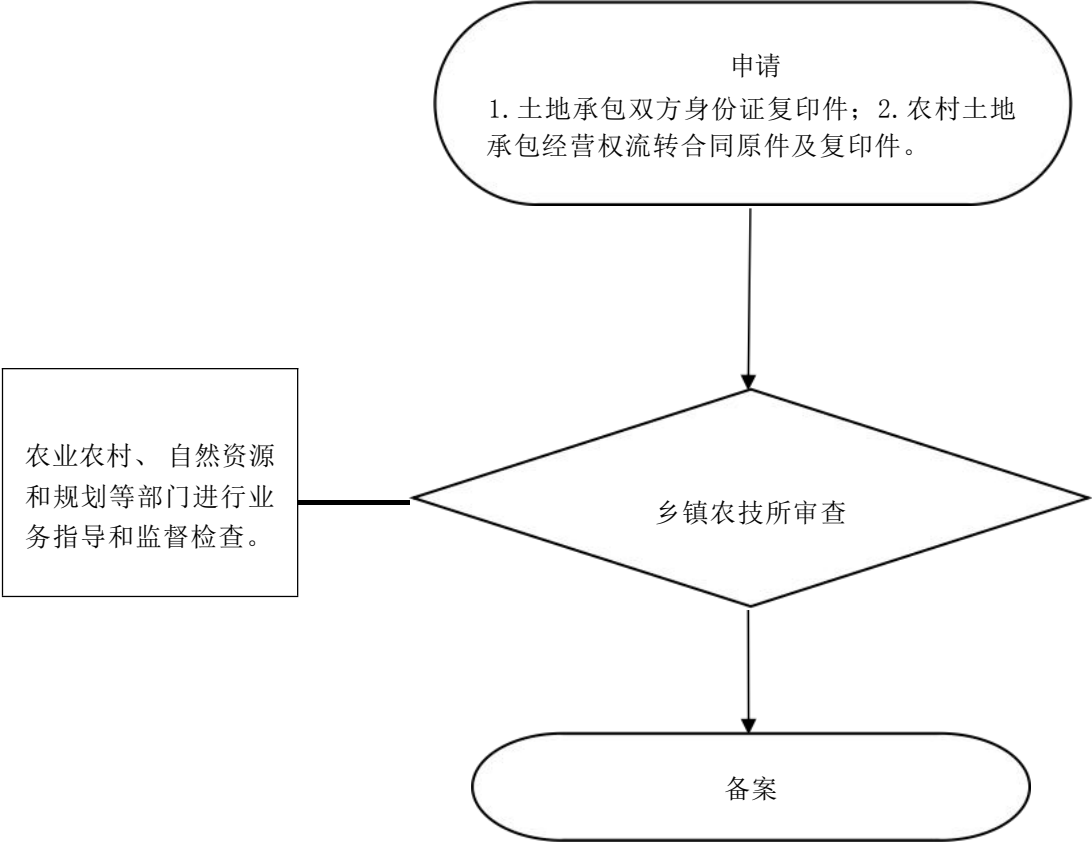
### 30.城镇住房保障家庭租赁补贴初审



31.业主委员会、临时管理规约备案业主委员会备案

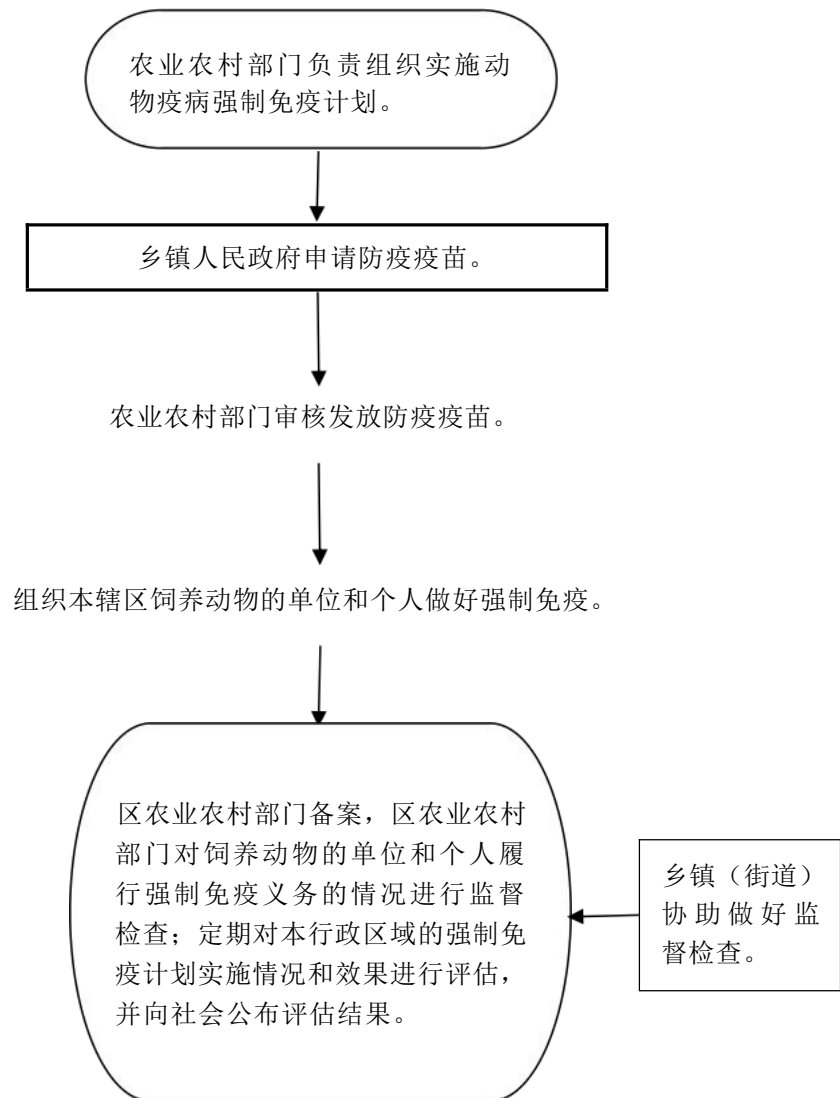


### 32.土地承包合同的备案

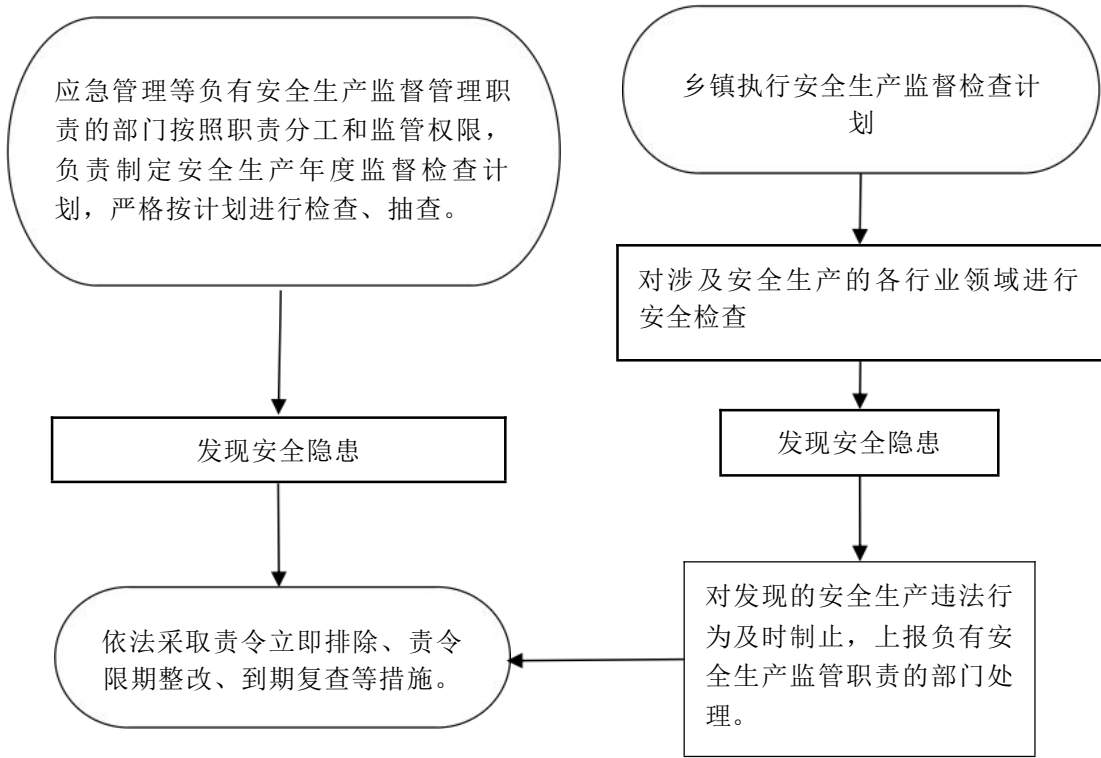




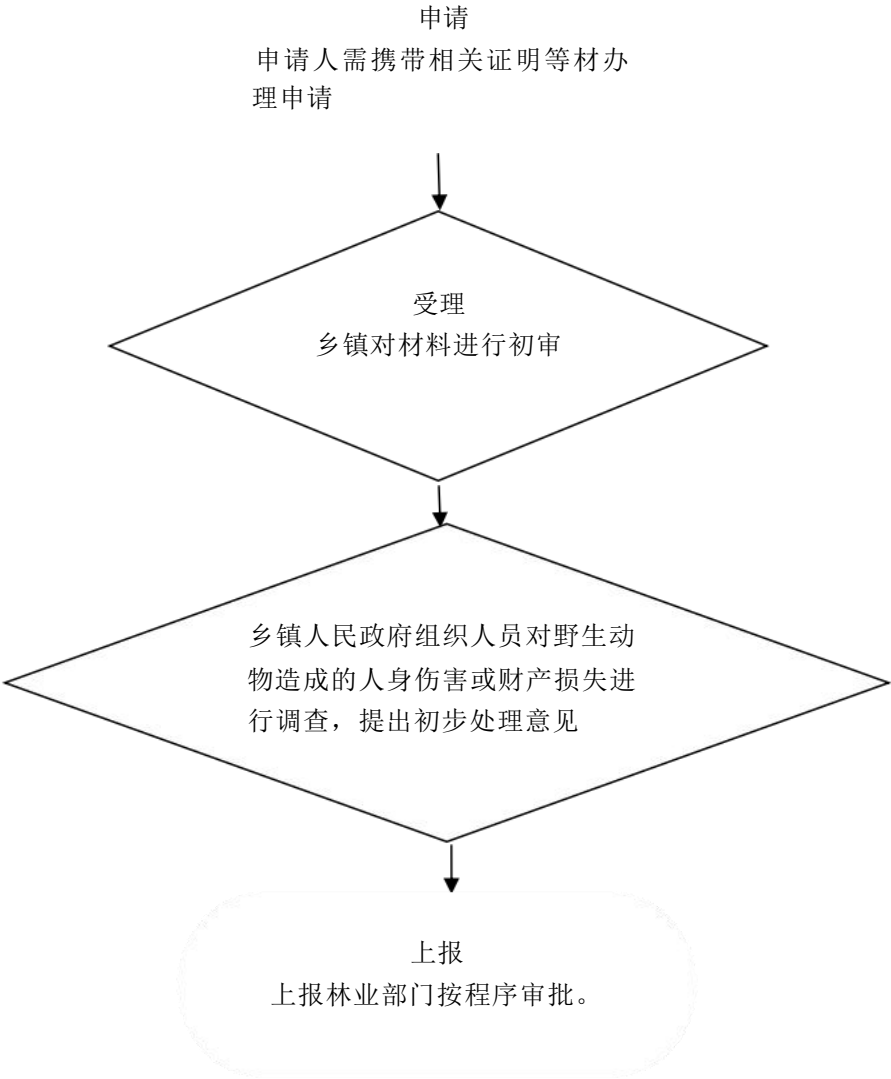
### 33. 组织开展动物疫病强制免疫



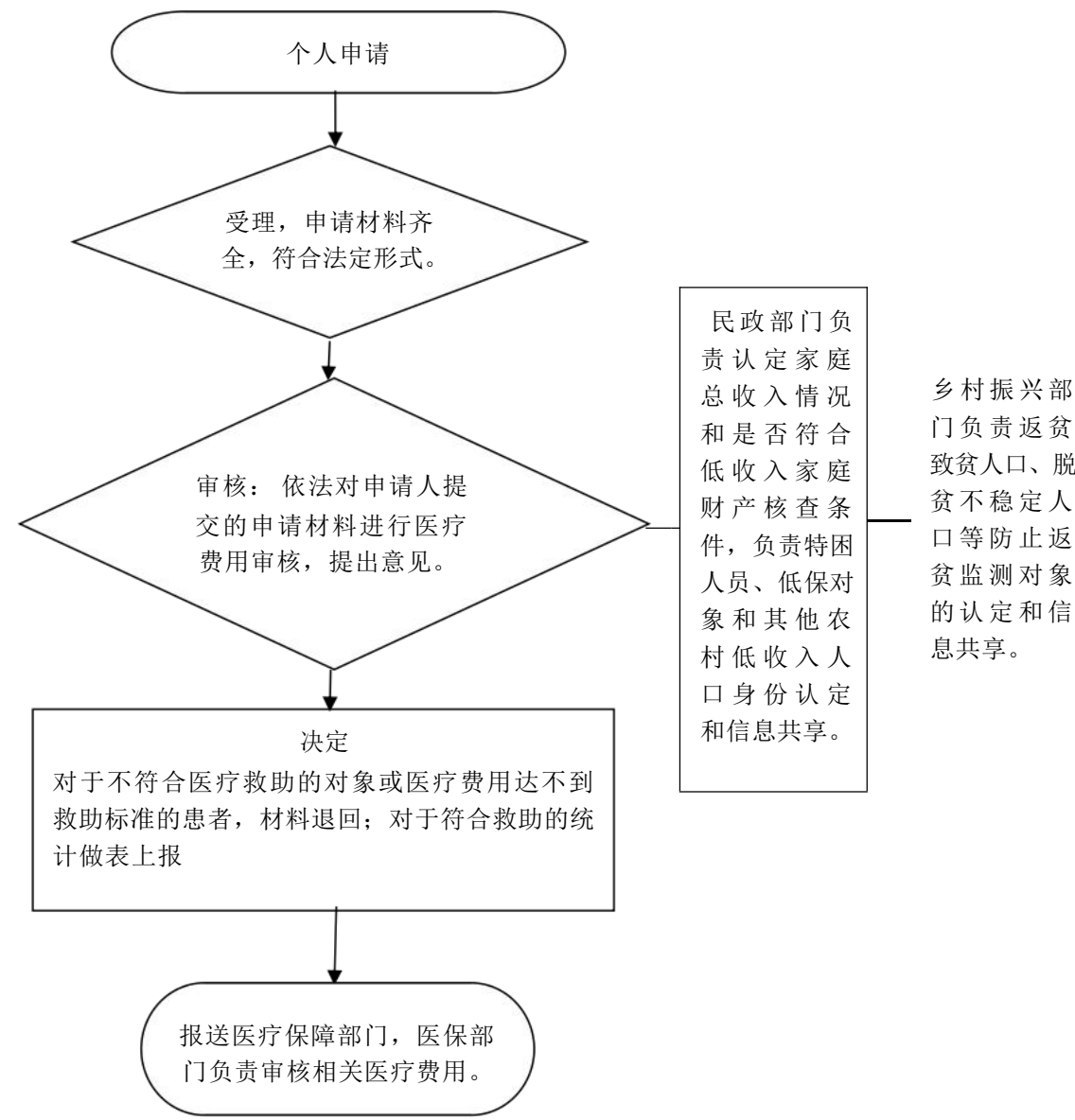
### 34.对生产经营单位安全生产监督检查



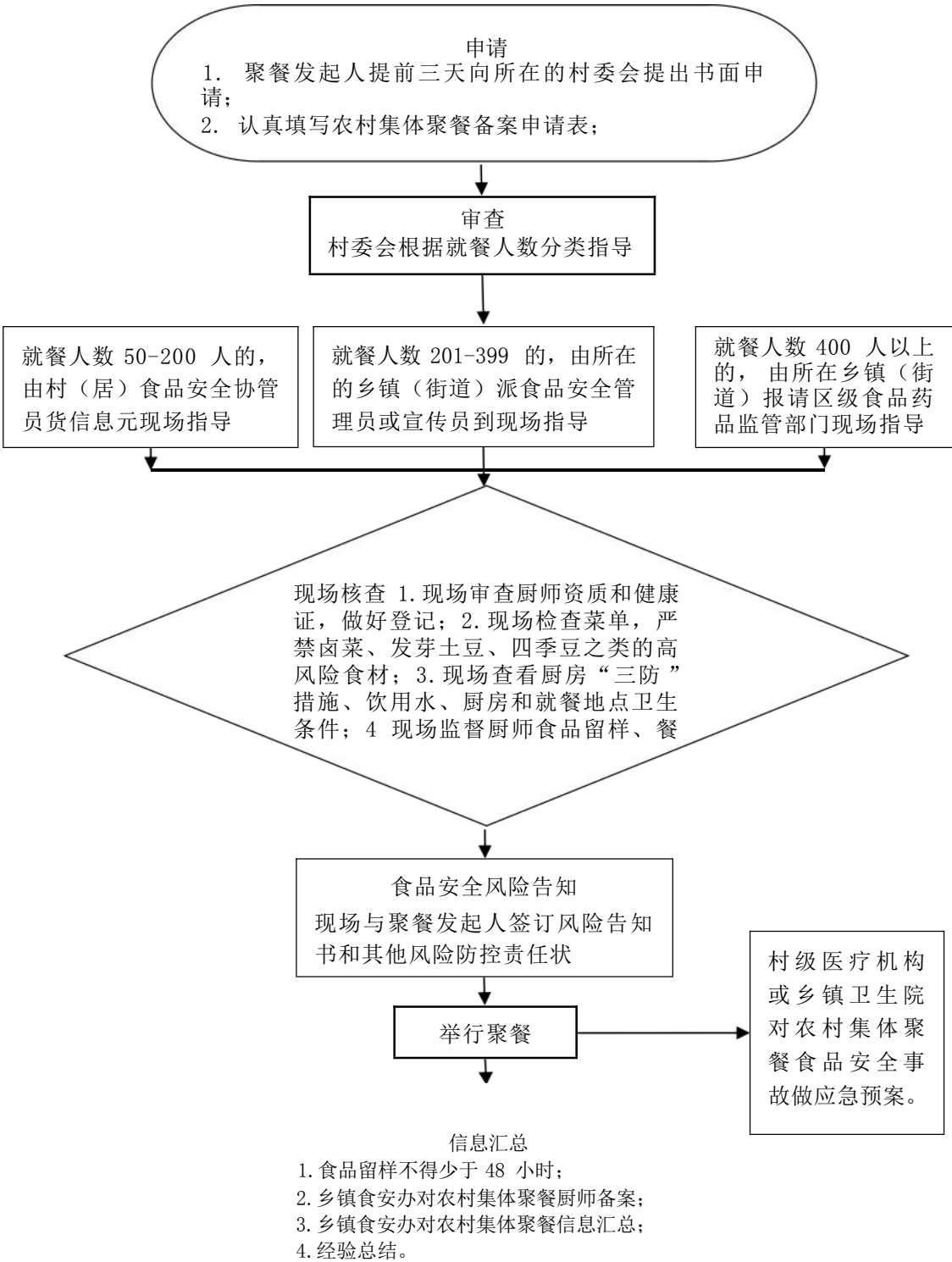
35.对陆生野生动物造成人身伤害和财产损失补偿申请的初审转报



### 36.医疗救助待遇审核转报



### 37.农村集体聚餐厨师备案



### 38.兵役登记

区级武装部登记宣传发动，适龄青年携带身份证、户口本、毕业证进行兵役登记。本人因特殊情况不能亲自前往登记的，可以委托其亲属或所在单位代为登记。

